

TRAKTOR KONTROL S8



Setup Guide



The information in this document is subject to change without notice and does not represent a commitment on the part of Native Instruments GmbH. The software described by this document is subject to a License Agreement and may not be copied to other media. No part of this publication may be copied, reproduced or otherwise transmitted or recorded, for any purpose, without prior written permission by Native Instruments GmbH, hereinafter referred to as Native Instruments.

“Native Instruments”, “NI” and associated logos are (registered) trademarks of Native Instruments GmbH.

Mac, Mac OS, GarageBand, Logic, iTunes and iPod are registered trademarks of Apple Inc., registered in the U.S. and other countries.

Windows, Windows Vista and DirectSound are registered trademarks of Microsoft Corporation in the United States and/or other countries.

All other trade marks are the property of their respective owners and use of them does not imply any affiliation with or endorsement by them.

Document authored by: Native Instruments GmbH

Software version: 2.7 (10/2014)

Special thanks to the Beta Test Team, who were invaluable not just in tracking down bugs, but in making this a better product.

NATIVE INSTRUMENTS GmbH

Schlesische Str. 29-30
D-10997 Berlin
Germany
www.native-instruments.de

NATIVE INSTRUMENTS North America, Inc.

6725 Sunset Boulevard
5th Floor
Los Angeles, CA 90028
USA
www.native-instruments.com

NATIVE INSTRUMENTS K.K.

YO Building 3F
Jingumae 6-7-15, Shibuya-ku,
Tokyo 150-0001
Japan
www.native-instruments.co.jp

NATIVE INSTRUMENTS UK Limited

18 Phipp Street
London EC2A 4NU
UK
www.native-instruments.com



© NATIVE INSTRUMENTS GmbH, 2014. All rights reserved.

Table of Contents

1	Welcome	7
1.1	This is Included in the Box	7
1.2	Document Conventions	7
2	Software Installation	9
2.1	Important Software Installation Information	9
2.2	Installation on Mac OS X	10
2.2.1	Locate and Start the Installation Program	10
2.2.2	Select the Components to Install	10
2.2.3	Enter Your Password	12
2.2.4	Complete the Installation	13
2.3	Installation on Windows	14
2.3.1	Locate and Start the Installation Program	14
2.3.2	Confirm the Features to Install	15
2.3.3	Confirm the Application Installation Path	16
2.3.4	Select Your Hardware Drivers	17
2.3.5	Complete the Software Installation	17
3	Product Activation with SERVICE CENTER	19
3.1	Activating Your Product Online	19
3.1.1	Start SERVICE CENTER	19
3.1.2	Log In Into Your User Account	20
3.1.3	Activate the Product	21
3.1.4	Finish the Online Activation	22
3.2	Updating Your Product	23
3.2.1	Select Updates	23
3.2.2	Download the Updates	24
3.2.3	Install Your Updates	25

3.3	Activating Your Product Offline	26
3.3.1	Start the Offline Activation	27
3.3.2	Create the Activation Request File	28
3.3.3	Enter the Serial Number	29
3.3.4	Transfer the Activation Request File	30
3.3.5	Open the Activation Return File	31
3.3.6	Finish the Offline Activation	32
3.4	Further Information	33
4	Hardware Installation	34
4.1	Important Hardware Installation Information	35
4.2	Connecting to Your Computer	36
4.3	Connecting Headphones	36
4.4	Connecting an Amplification System	37
4.5	Connecting the Power Supply	39
4.6	Final Preparations	41
5	Overview of further TRAKTOR KONTROL S8 Setups	42
5.1	Basic Setup with optional Microphone	42
5.2	TRAKTOR SCRATCH PRO Setup	44
5.3	Additional Mixer Setup	45
6	What's Next	48
7	Troubleshooting and FAQ	49
7.1	Installation Folder Not Found by an Update Installer	49
7.2	Audio Clicks and Drop-outs When Playing Tracks	49
7.3	More Troubleshooting Resources	49
8	Support	50
8.1	Knowledge Base / Online Support / Readme	50
8.2	Forum	51

8.3	Updates	51
9	Product Returns	52

1 Welcome

Thank you for purchasing the TRAKTOR KONTROL S8. On behalf of the entire Native Instruments team, we hope you are truly inspired by this product. This Setup Guide covers the following topics:

- How to install the TRAKTOR software on your computer.
- How to activate your TRAKTOR version using the SERVICE CENTER application.
- How to connect the devices and get your TRAKTOR KONTROL S8 system up and running.
- How to proceed once your TRAKTOR KONTROL S8 system is up and running.
- How to solve common problems, and where to find further product support.

1.1 This is Included in the Box

The TRAKTOR KONTROL S8 box contains the following items:

- The TRAKTOR KONTROL S8.
- The TRAKTOR KONTROL S8 's power supply.
- A USB cable.
- A registration flyer with your TRAKTOR SCRATCH PRO 2 software serial number, your TRAKTOR KONTROL S8 hardware serial number, and a link to the hardware registration page, where you can register your hardware and download the TRAKTOR KONTROL S8 software.
- A safety instructions flyer.

1.2 Document Conventions

This document uses particular formatting to point out special facts and to warn you of potential issues. The icons introducing the following notes let you see what kind of information can be expected:



Whenever this exclamation mark icon appears, you should read the corresponding note carefully and follow the instructions and hints given there if applicable.



This light bulb icon indicates that a note contains useful extra information. This information may often help you to solve a task more efficiently, but does not necessarily apply to the setup or operating systems you are using; however, it's always worth a look.

Furthermore, the following formatting is used:

- Text appearing in (drop-down) menus (such as *Open...*, *Save as...*) and paths to locations on your hard drive or other storage devices is printed in *italics*.
- Text referring to elements appearing on the screen (labels of buttons, controls, text next to checkboxes, etc.) is printed in light blue. Whenever you see this formatting applied, you will find the same text appearing on your computer screen.
- Text referring to elements printed on hardware is formatted orange. Whenever you see this formatting applied, you will find the same text appearing on the hardware.
- Important names and concepts are printed in **bold**.
- ▶ Single instructions are introduced by this play button type arrow.
- Results of actions are introduced by this smaller arrow.

2 Software Installation

This section describes the installation process of the TRAKTOR software on Mac and on Windows.

2.1 Important Software Installation Information

Before starting the TRAKTOR software installation, here are some points to be aware of:

- Make sure you have downloaded the TRAKTOR software to your computer by following the instructions on the registration page:
<http://www.native-instruments.com/go-S8>
If you have already registered your device but need to download the installer again, you can find the relevant downloads in the "My Account" section of the NI website:
<https://www.native-instruments.com/en/my-account/my-products-serials>
- Carefully review the installer screens and the suggested installation paths in order to avoid that any unwanted folders are created on your hard disk.
- Moving any folders related to Native Instruments software after installation is not recommended. Future software updates rely on the directory locations set during initial installation.
- After successful installation, you will find the TRAKTOR software installation folder on your hard disk containing the application and the documentation resources. If you installed using the default settings, these folders can be found here:
 - Mac OS X: *Macintosh HD/Applications/Native Instruments/Traktor 2/*
 - Windows: *C:\Program Files\Native Instruments\Traktor 2*

If you are using a Mac, continue reading with the following section [↑2.2, Installation on Mac OS X](#) and install the TRAKTOR software as explained. If you want to install the TRAKTOR software on a Windows computer, continue reading with section [↑2.3, Installation on Windows](#) and follow the instructions.

2.2 Installation on Mac OS X

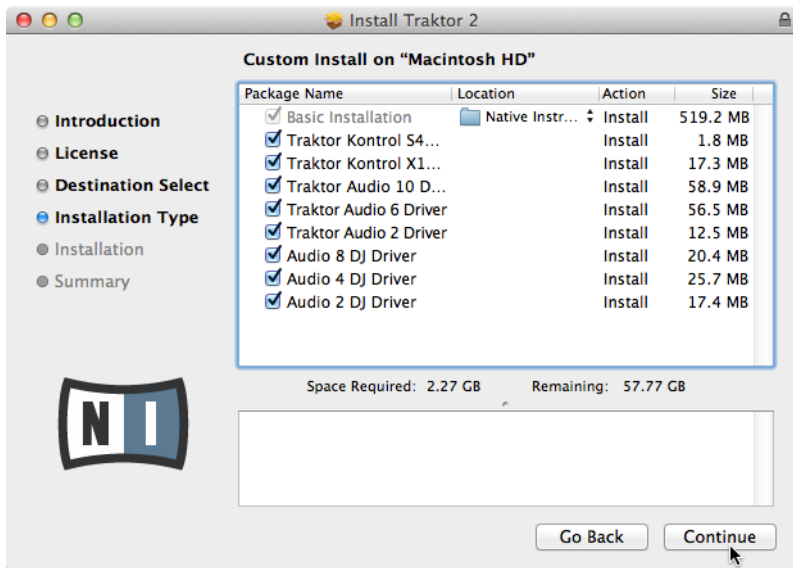
This section describes the process of installing the TRAKTOR software on Mac OS X. At the end of the installation process, you will need to restart your computer. Please save your work and close all applications before proceeding.

2.2.1 Locate and Start the Installation Program

1. Locate and unpack the downloaded installer package file on your computer.
2. Double-click the **Traktor 2 Installer.mpkg** file to start the installation procedure.
3. Follow the on-screen instructions.

2.2.2 Select the Components to Install

After you have accepted the software license agreement, the installer window displays the components available for installation. This installer screen also contains information regarding the amount of disk space the individual components will use.



The components selection screen of the installation program.

Basic Installation: This installs the TRAKTOR software along with its documentation. This component cannot be deselected. It also installs the SERVICE CENTER application (required for activation of your product) and the CONTROLLER EDITOR application, which allows you to configure the controller's MIDI assignments for using the controller with applications other than TRAKTOR.

Traktor Kontrol S4: This installs the driver for the TRAKTOR KONTROL S4 controller. If you do not intend to use a TRAKTOR KONTROL S4 controller on your computer, you can deactivate the checkbox.

Traktor Kontrol X1: This installs the driver for the TRAKTOR KONTROL X1 controller. If you do not intend to use a TRAKTOR KONTROL X1 controller on your computer, you can deactivate the checkbox.

Traktor Audio 10/6/2 Drivers: This installs the drivers for the TRAKTOR AUDIO 10, TRAKTOR AUDIO 6 and TRAKTOR AUDIO 2 audio interfaces by Native Instruments. If you do not intend to use any of these audio interfaces, you can deactivate the checkboxes.

Audio 8/4/2 DJ Drivers: This installs drivers for the AUDIO 8 DJ, AUDIO 4 DJ and AUDIO 2 DJ audio interfaces by Native Instruments. If you do not intend to use any of these audio interfaces, you can deactivate the checkboxes.

Background Components

These components are not displayed in the installer window, but are always installed:

SERVICE CENTER: The SERVICE CENTER application is required for activation of the TRAKTOR software. This component will automatically be installed unless a newer version of SERVICE CENTER already exists on your computer.

CONTROLLER EDITOR: The CONTROLLER EDITOR application allows you to configure your controller for use as a MIDI controller with applications other than the TRAKTOR software. This component will automatically be installed unless a newer version of CONTROLLER EDITOR already exists on your computer.

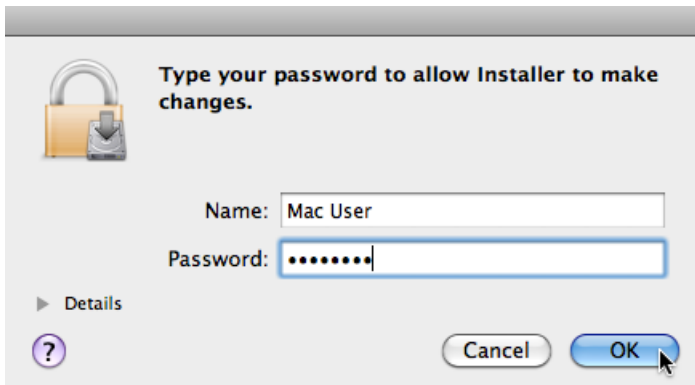
It is strongly recommended to install the TRAKTOR software to the default location. If you still need to change the install location, click on the folder icon in the [Location](#) column and select the desired folder.

- ▶ After you have customized the installation as required, click [Continue](#) and then follow the on-screen instructions.

2.2.3 Enter Your Password

Before installing the selected components, the installer will prompt you to enter your Mac OS X password. This is a standard behavior on Mac OS X that makes sure you are aware of the changes the installer is about to make.

The Mac OS X user account you are using needs to have Administrator privileges.

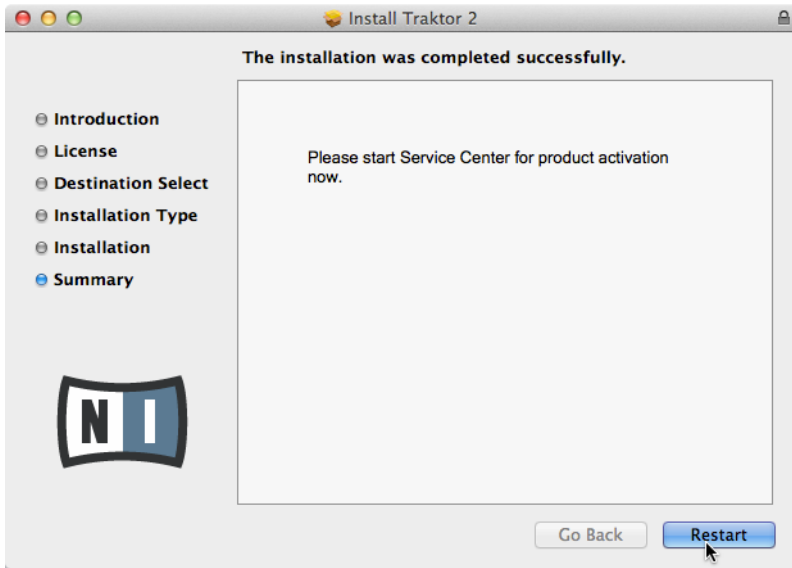


The Mac OS X password prompt.

- ▶ To proceed, enter your password and click **OK**.
- The selected components will be installed.

2.2.4 Complete the Installation

After the components have been installed, you need to restart your computer.



The final screen of the installation program.

- ▶ Click [Restart](#) to restart your computer and complete the software installation.
- Your computer will immediately restart.
- ▶ After your computer has restarted, start reading section [↑3, Product Activation with SERVICE CENTER](#) of this Setup Guide for information about product activation.

2.3 Installation on Windows

This section describes the installation process of the TRAKTOR software on Windows.



It may be necessary to disable your anti-virus software during installation, please refer to the software's own documentation for further information.

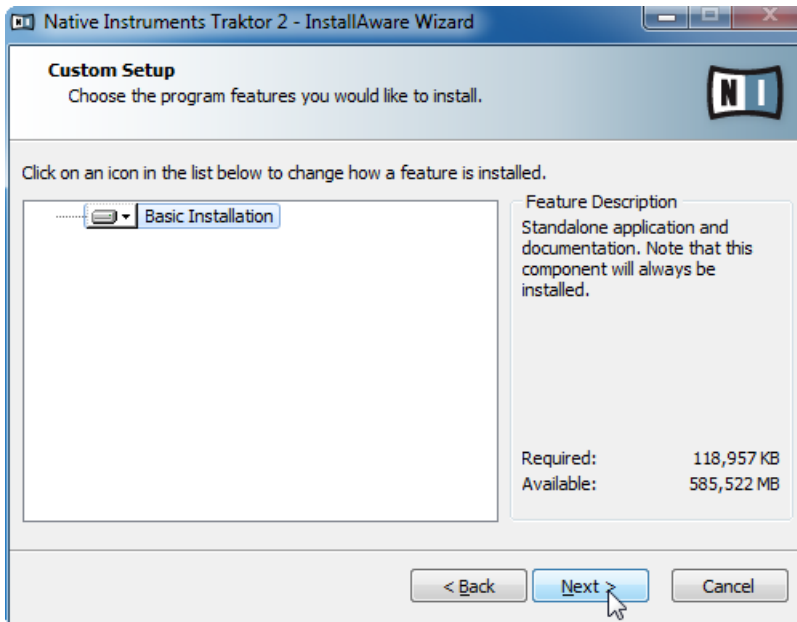
2.3.1 Locate and Start the Installation Program

1. Locate and unpack the downloaded installer package file on your computer.

2. Double-click the **Traktor 2 Setup.exe** file to start the installation procedure.
3. Follow the on-screen instructions.

2.3.2 Confirm the Features to Install

After you have accepted the software license agreement, the installer window displays the features available for installation.



The components selection screen of the installation program.

Basic Installation: This installs the TRAKTOR software along with its documentation. This component cannot be deselected.

Background Components

These components are not displayed in the installer window, but are always installed:

SERVICE CENTER: The SERVICE CENTER application is required for activation of the TRAKTOR software. This component will automatically be installed unless a newer version of SERVICE CENTER already exists on your computer.

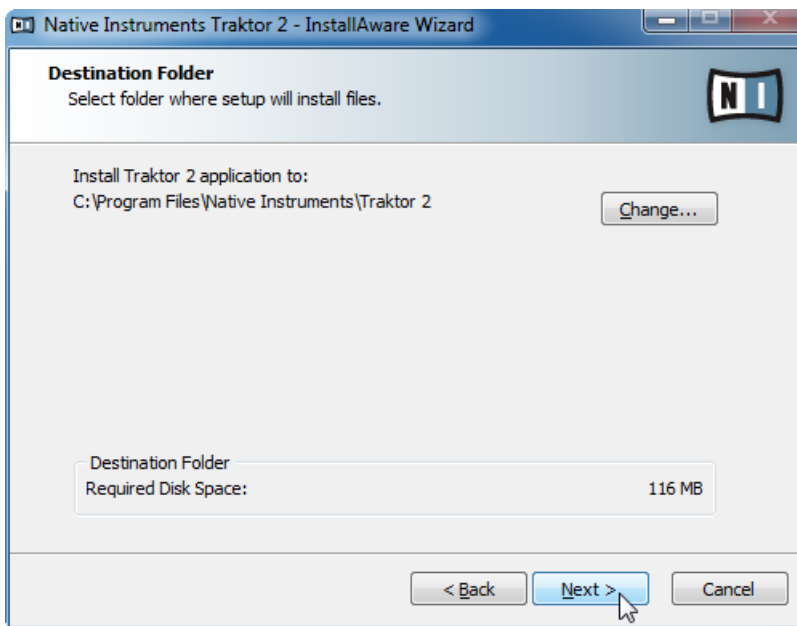
CONTROLLER EDITOR: The CONTROLLER EDITOR application allows you to configure your controller for use as a MIDI controller with applications other than the TRAKTOR software. This component will automatically be installed unless a newer version of CONTROLLER EDITOR already exists on your computer.

- ▶ Click [Continue](#) and then follow the on-screen instructions.

2.3.3 Confirm the Application Installation Path

It is strongly recommended to install the TRAKTOR software to the default location. If you still need to change the install location, click [Change](#) to open the Folder Selection dialog and select the desired destination folder.

You will be asked to select and confirm an installation path for the TRAKTOR software.

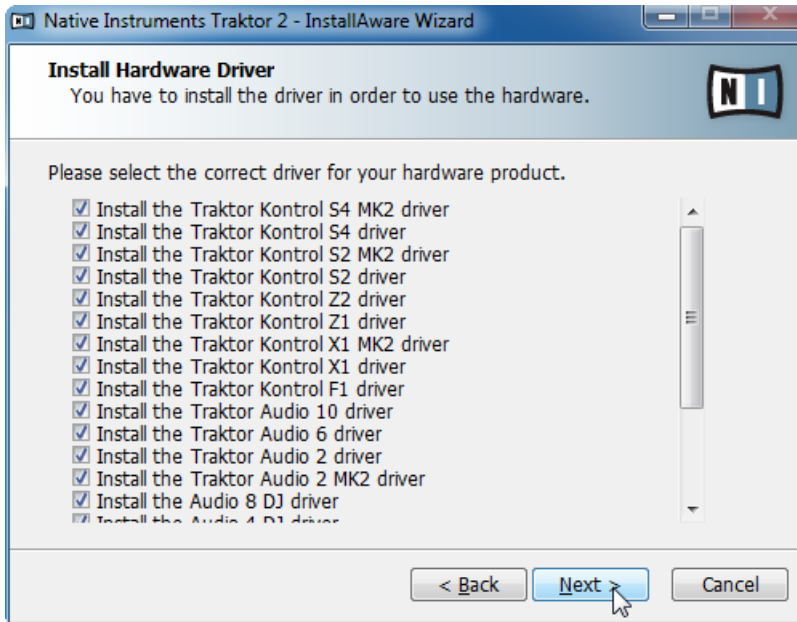


The software installation path screen of the installation program.

- ▶ Click [Next](#) to proceed.

2.3.4 Select Your Hardware Drivers

After defining or confirming the program's installation path, you will be presented with a driver selection screen. It is recommended to select all drivers from the driver selection screen unless you have a specific reason to deselect a driver (such as if the driver is already installed on your computer, or you are very sure you will never use the device with TRAKTOR).

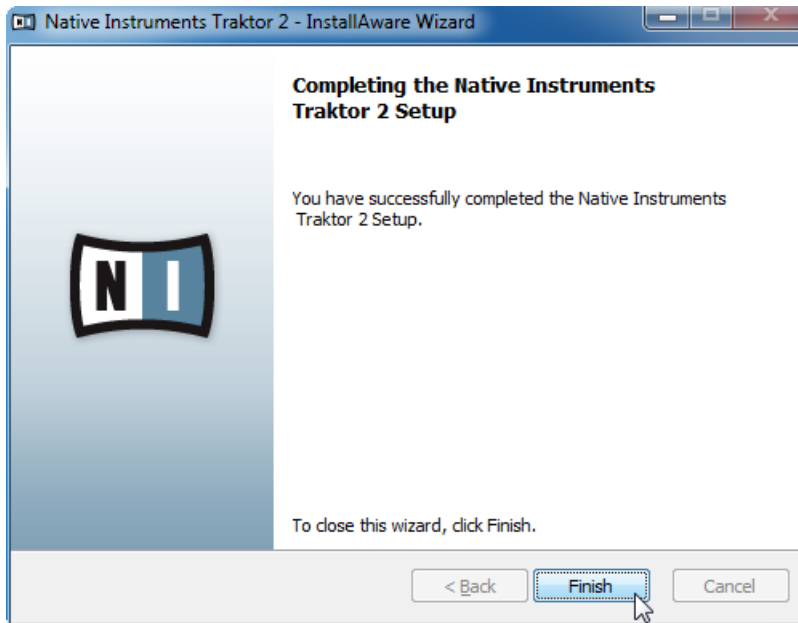


The Hardware Drivers screen of the installation program.

- ▶ Click [Next](#) to proceed.

2.3.5 Complete the Software Installation

Once you have selected the driver and confirmed your selection, you will be forwarded to the last screen of the installation program.



The final screen of the installation program.

- ▶ Click **Finish** to complete the installation and exit the installation program.
- ▶ Continue reading in section [↑3, Product Activation with SERVICE CENTER](#) and follow the instructions for activating your product.

3 Product Activation with SERVICE CENTER

This section uses a placeholder name ("NI Product") on all screenshots. The relevant section on your screen will display the name of the Native Instruments product you are activating.


3.1 Activating Your Product Online

Skip to section [↑3.3, Activating Your Product Offline](#) if your computer is not connected to the Internet.

3.1.1 Start SERVICE CENTER

1. Locate the SERVICE CENTER application on your hard disk. During installation, a folder labeled **Native Instruments** was created in the Applications (Mac OS X) / Program Files (Windows) folder. Within this folder, a subfolder labeled **SERVICE CENTER** holds the corresponding application.
 2. Double-click the SERVICE CENTER application to start the activation procedure.
- It is necessary to activate your Native Instruments product in order to use its full functionality.

3.1.2 Log In Into Your User Account

SERVICE CENTER 

Log in

Please log in using your email address and password.


E-mail address

Password

Log me in automatically on next startup

› [Forgot your password?](#)

› [Create new user account](#)

 Log in

Status:
Online

The log-in screen of SERVICE CENTER.

- ▶ Log in with your e-mail address and Native Instruments password.
- ▶ If you do not have a Native Instruments account yet, click on [Create new User Account](#). Fill in the address form. The password will be sent to you via e-mail.

3.1.3 Activate the Product

SERVICE CENTER

Activate Update Overview Settings Support

Enter the serial numbers for the products you want to activate.

NI PRODUCT

12345 67890 09

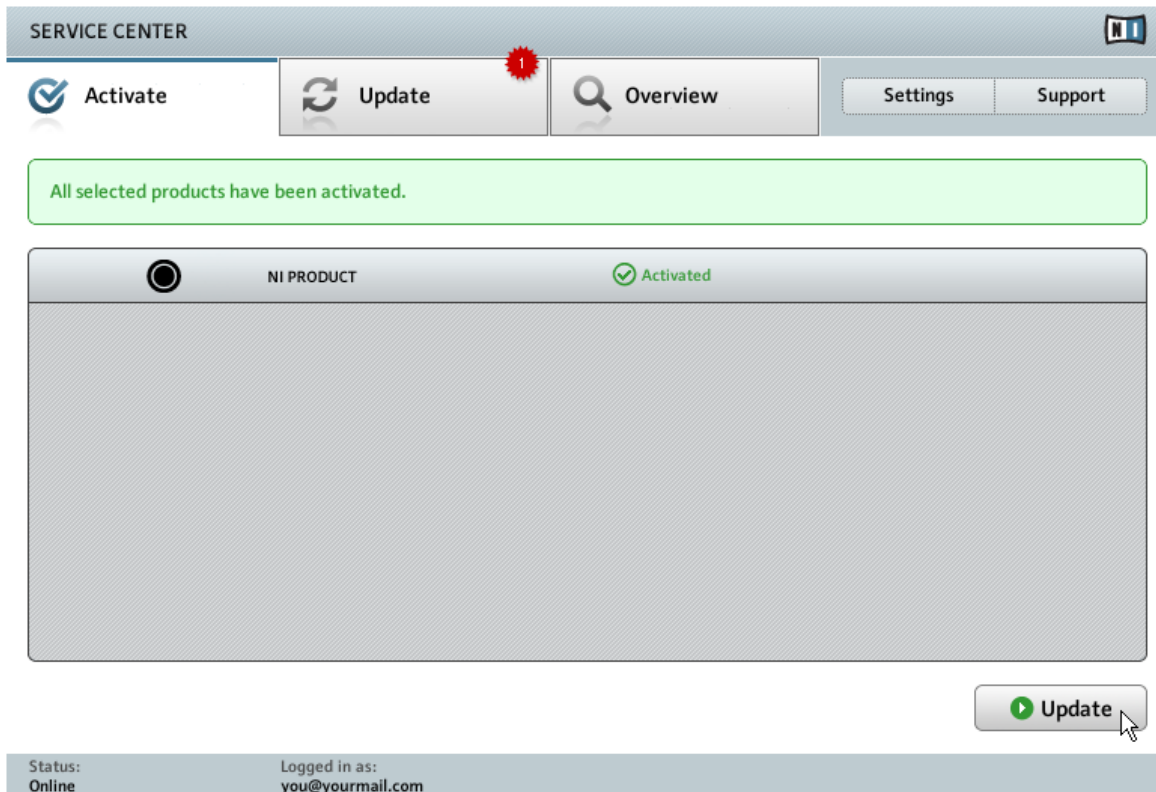
Activate

Status: Online Logged in as: you@yourmail.com

The product activation screen of SERVICE CENTER.

1. Enter the software serial number in the number field. The software serial number is located on the registration flyer, which you can find in your TRAKTOR KONTROL S8 product box.
2. Click [Activate](#) to proceed.

3.1.4 Finish the Online Activation



SERVICE CENTER confirming the product activation.

SERVICE CENTER confirms that the product has been activated successfully. A search for updates will start automatically.

- If updates for any of the activated products are available, the button in the bottom right corner of the screen reads [Update](#). To download the updates, click the [Update](#) button and proceed with chapter [↑3.2, Updating Your Product](#).
- If no updates are available, the button in the bottom right corner of the screen reads [Exit](#). You can click it to close SERVICE CENTER.

3.2 Updating Your Product

3.2.1 Select Updates

SERVICE CENTER

Activate Update Overview Settings Support

Please select the updates you want to download. If you want to download updates for another operating system, visit www.native-instruments.com/updates.

Software Updates 1 file available Hide Details

<input checked="" type="checkbox"/>	<input type="radio"/>	NI PRODUCT Update	i	2013-09-01, 179.09 MB

Download folder: Macintosh HD: [path] Download

Status: Online Logged in as: you@yourmail.com

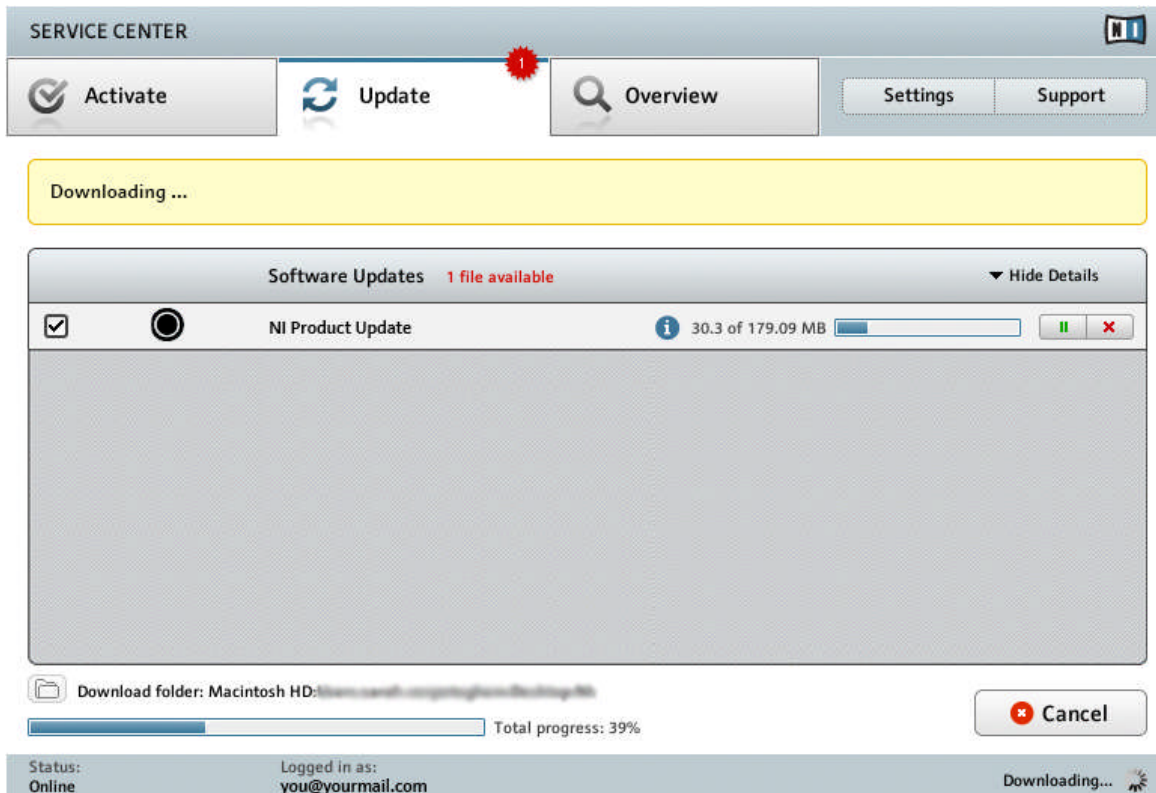
The product update screen of SERVICE CENTER.

1. In SERVICE CENTER, click the [Update](#) tab to view a list of available updates.
2. Select the updates you want to download by checking the checkboxes on the left. We recommend downloading all preselected updates.
3. Click [Download](#).

→ The download will start.

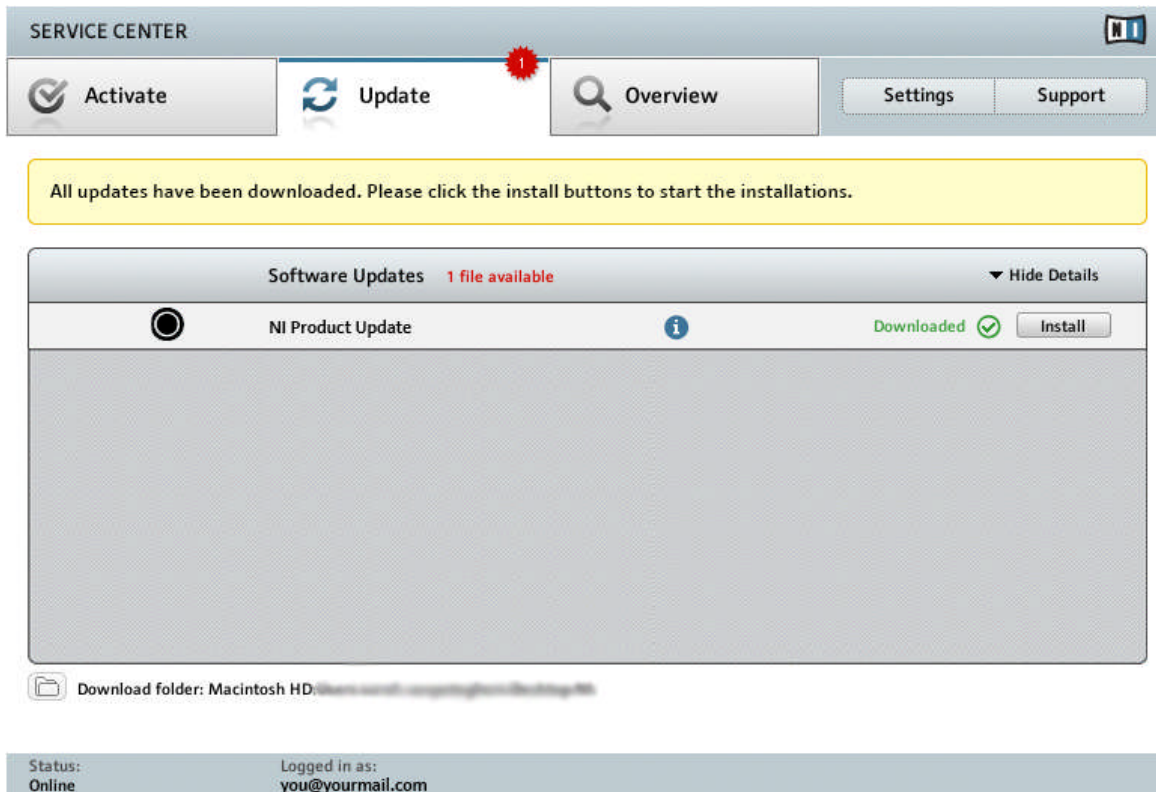
3.2.2 Download the Updates

Depending on the file size and the speed of your internet connection, downloading the files may take a while. We strongly recommend that you always install the latest updates.



The product update in progress.

3.2.3 Install Your Updates



SERVICE CENTER confirming all updates were downloaded, and offering to install the download file.

After all files have been downloaded successfully, you can directly install the updates from the SERVICE CENTER:

- ▶ Click on [Install](#) to install your update. This will automatically install your update silently.
- ▶ After you have updated the software, you can quit SERVICE CENTER and start the software as usual.

In case the installation of a software update fails, SERVICE CENTER will notify you by respective error messages.

3.3 Activating Your Product Offline

If the computer you want to use Native Instruments products on is permanently not connected to the internet, you can activate the products utilizing the Offline activation procedure. Note that you will need a second computer that is connected to the internet.

3.3.1 Start the Offline Activation

SERVICE CENTER

Internet connection

Service Center was unable to establish an internet connection. How do you wish to proceed?

Try connecting to the internet again

Make sure that your computer is connected to the internet.

Use a proxy server to connect to the internet

Host Port

Continue without connecting to the internet

Please note: You will have to transfer an Activation Request File to a computer with internet access.

Status:
Pending...

The internet connection screen of SERVICE CENTER.

1. Start SERVICE CENTER. If no internet connection is detected, you will be redirected to the [Internet connection](#) screen pictured above.
2. In the [Continue without connection to the internet](#) area at the bottom of the screen, click [Offline](#). You will be forwarded to the [Activate](#) screen.

3.3.2 Create the Activation Request File

The screenshot displays the SERVICE CENTER interface. At the top, there is a navigation bar with the following options: **Activate** (with a checkmark icon), **Update** (with a refresh icon), **Overview** (with a magnifying glass icon), **Settings**, and **Support**. Below the navigation bar, a yellow notification box states: "You have to complete three steps to do an Offline Activation." The main content area is divided into three numbered steps:

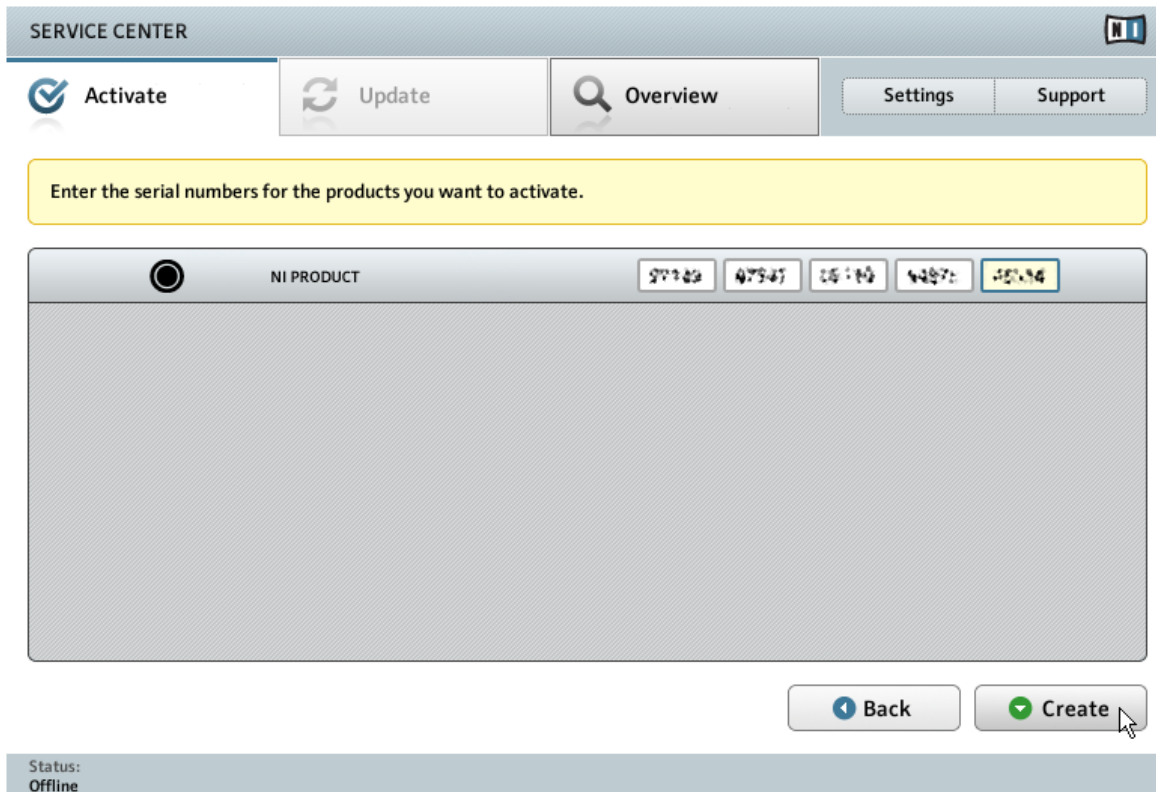
- 1. Create Activation Request File**
Enter serial numbers and save the Activation Request File to a portable storage device, e. g. an USB stick. A **Create** button with a green checkmark icon is visible.
- 2. Transfer File to Internet Computer**
Take the Activation Request File to a computer with internet access and open it on that computer. This will load the Native Instruments Registration web page.
- 3. Open Activation Return File**
Copy the Activation Return File returned by the Native Instruments web server to a portable storage device and open it on the computer that you want to activate the product on. An **Open** button with a green checkmark icon is visible.

At the bottom left, a status bar indicates: **Status: Offline**.

The offline activation screen of SERVICE CENTER.

- ▶ On the [Activate](#) screen, click [Create](#). The [Activate](#) screen will display fields in which to enter the serial number (see next step).

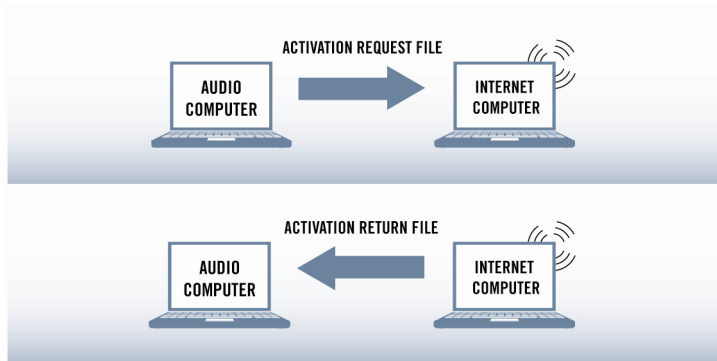
3.3.3 Enter the Serial Number



The product activation screen of SERVICE CENTER.

1. Enter the software serial number in the number field. The software serial number is located on the registration flyer, which you can find in your TRAKTOR KONTROL S8 product box.
2. Click **Create** to save the Activation Request File (ActivationRequestFile.html). A Save File dialog will open and let you select a target folder.
3. Save the Activation Request File to the desired target folder.

3.3.4 Transfer the Activation Request File



The offline activation procedure.

1. Copy the Activation Request file to a portable storage device and transfer it to a computer with internet connection.
2. Open the Activation Request file by double-clicking it.
3. Follow the instructions on the SERVICE CENTER product activation web page. As a new Native Instruments user you will need to create a new account before you can log in.
4. Transfer the Activation Return file back to your audio computer.

3.3.5 Open the Activation Return File

The screenshot displays the SERVICE CENTER application interface. At the top, there is a navigation bar with the title 'SERVICE CENTER' and the NI logo. Below the title bar, there are several tabs: 'Activate' (selected), 'Update', 'Overview', 'Settings', and 'Support'. A yellow notification box states: 'You have to complete three steps to do an Offline Activation.' Below this, there are three numbered steps:

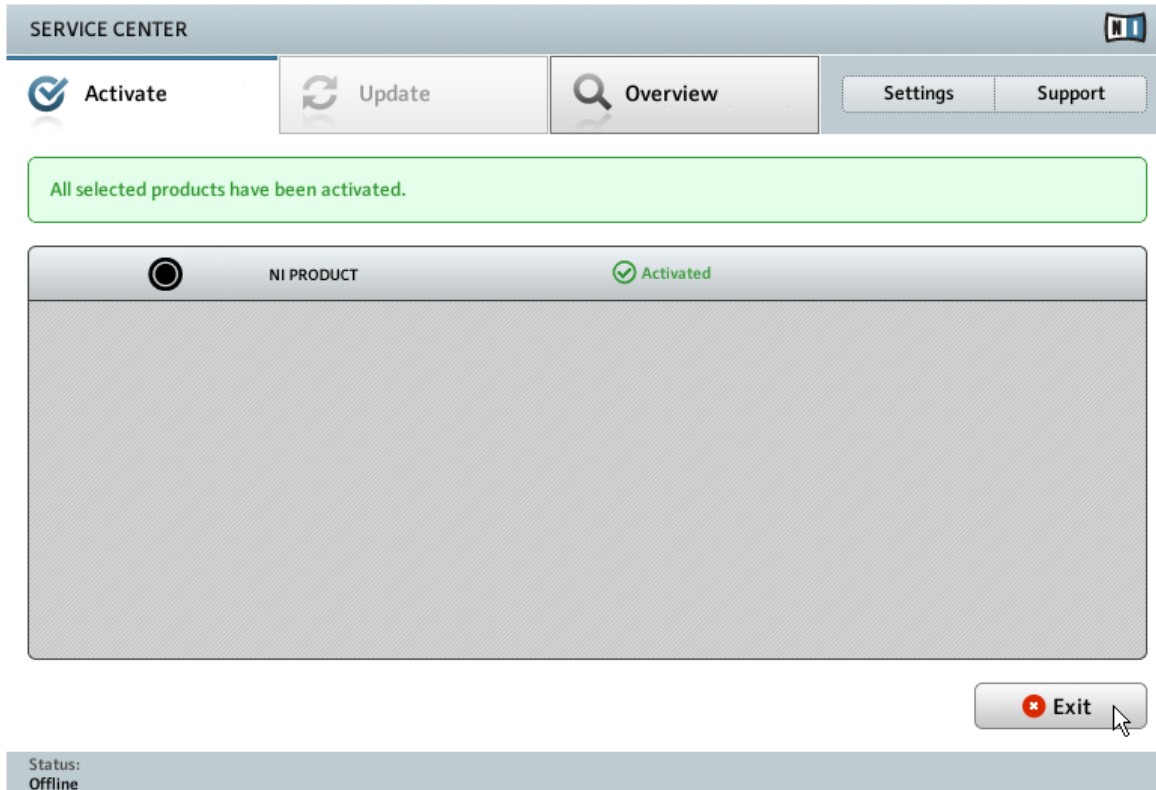
- 1. Create Activation Request File**
Enter serial numbers and save the Activation Request File to a portable storage device, e. g. an USB stick. A 'Create' button is visible.
- 2. Transfer File to Internet Computer**
Take the Activation Request File to a computer with internet access and open it on that computer. This will load the Native Instruments Registration web page.
- 3. Open Activation Return File**
Copy the Activation Return File returned by the Native Instruments web server to a portable storage device and open it on the computer that you want to activate the product on. An 'Open' button is visible.

At the bottom of the interface, a status bar indicates 'Status: Offline'.

The offline activation screen of SERVICE CENTER.

1. On your audio computer, start SERVICE CENTER again. In the [Continue without connection to the internet](#) area at the bottom of the screen, click [Offline](#).
2. Select the [Activate](#) tab and click [Open](#) to load the Activation Return file.

3.3.6 Finish the Offline Activation



SERVICE CENTER confirming the product activation.

After you have opened the Activation Return file, SERVICE CENTER confirms that the product has been activated successfully.

- ▶ Click [Exit](#) to quit SERVICE CENTER.



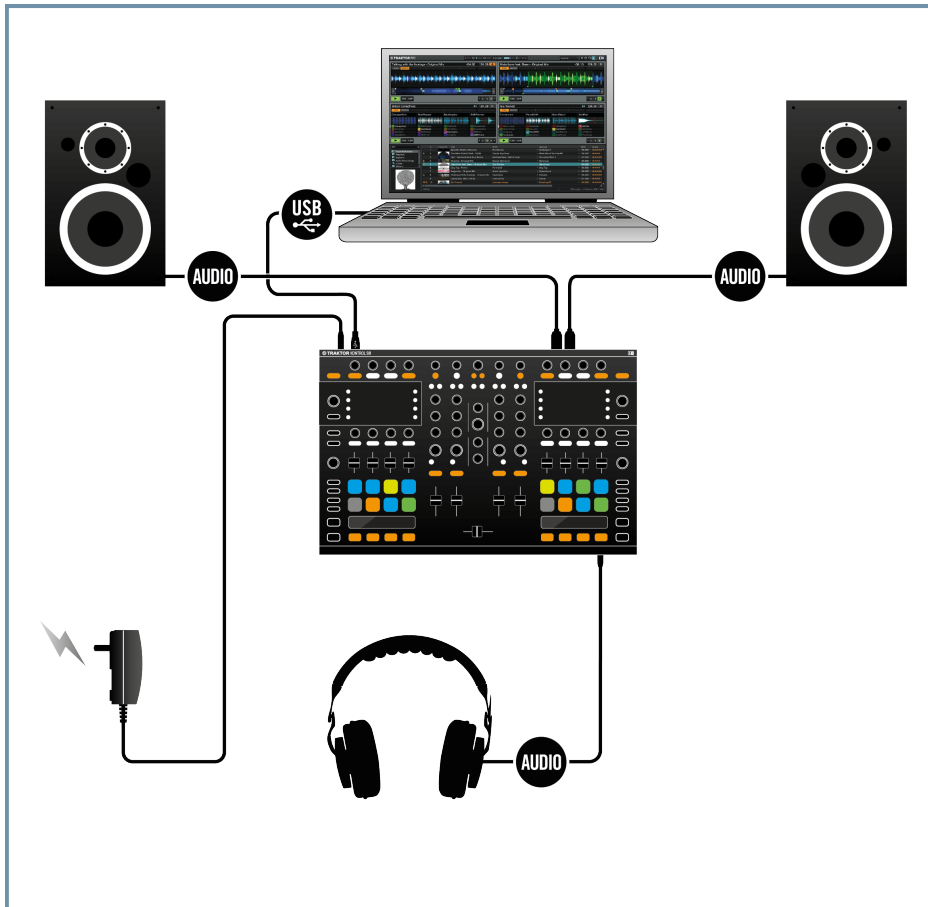
To obtain updates for your products, log in under <http://www.native-instruments.com/updates> using your Native Instruments user account information. Download all relevant updates from the Personal Update Manager to your internet computer, transfer them to your music computer utilizing portable storage media, and install them.

3.4 Further Information

For details on your registered products and their serial numbers as well as information on licenses and NI user account settings, please see My Account: <http://www.native-instruments.com/my-account/>

4 Hardware Installation

This section describes how to connect the TRAKTOR KONTROL S8 in a basic setup. When you have all devices connected your TRAKTOR KONTROL S8 system will look like this:



TRAKTOR KONTROL S8 basic setup.

4.1 Important Hardware Installation Information



When using the TRAKTOR KONTROL S8, ensure that only the included power supply is used. Using another could cause power issues.



Before you use the power supply, please refer to the TRAKTOR KONTROL S8 IMPORTANT SAFETY INSTRUCTIONS leaflet (included in the box). This leaflet explains how to attach the adaptor plug specific to your region.



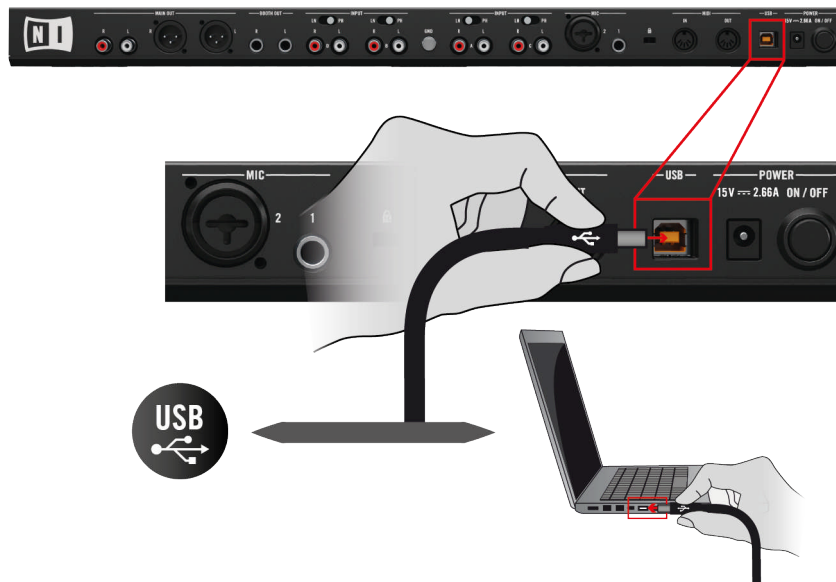
The TRAKTOR KONTROL S8—in combination with a power amplifier, speakers, or headphones—can produce sounds in decibel ranges that may cause hearing damage. Also, switching off the device with the volume control set to a high level may damage your loudspeakers. Always make sure the volume faders on the TRAKTOR KONTROL S8 are set to minimum before connecting the power supply, connecting external equipment, playing music, or switching the device on or off. Once everything is connected and set up, gradually raise the volume while music is playing until you reach the desired listening level.

- When using the TRAKTOR software on a Windows system, make sure that you have installed the TRAKTOR KONTROL S8 hardware driver with the TRAKTOR software installer before you connect the device to your computer. For this, please follow the instructions specific to your operating system in section [↑2, Software Installation](#).
- Due to high amounts of data transmitted to the TRAKTOR KONTROL S8, it may not work properly when connected to a USB hub. Ensure that it is directly connected to a USB port on your computer.

4.2 Connecting to Your Computer

To connect the TRAKTOR KONTROL S8 to your computer:

1. Connect the device end (square plug) of the included USB cable to the USB socket on the rear panel of your TRAKTOR KONTROL S8.
2. Connect the computer end (flat rectangle plug) of the USB cable to an available USB 2.0 port (or later) on your computer.



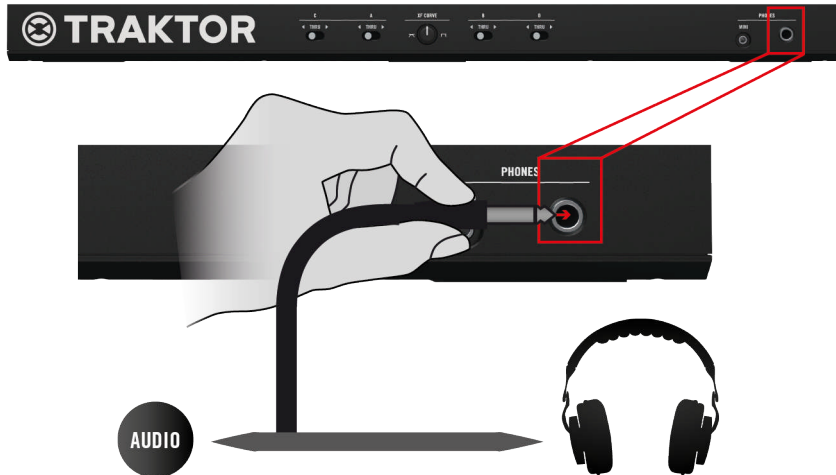
4.3 Connecting Headphones



To avoid damage to hearing before putting on headphones, always make sure the headphone volume control (**HP VOLUME** knob on the TRAKTOR KONTROL S8's top panel) is set to minimum! Then, slowly increase the headphone volume while music is playing until it reaches the desired listening level.

To connect headphones to the TRAKTOR KONTROL S8:

- ▶ Connect headphones to the **PHONES** socket on the front panel of the TRAKTOR KONTROL S8; note that there are two available headphones sockets. Connect using either a standard 6.3 mm jack, or the **MINI** 3.5 mm jack.



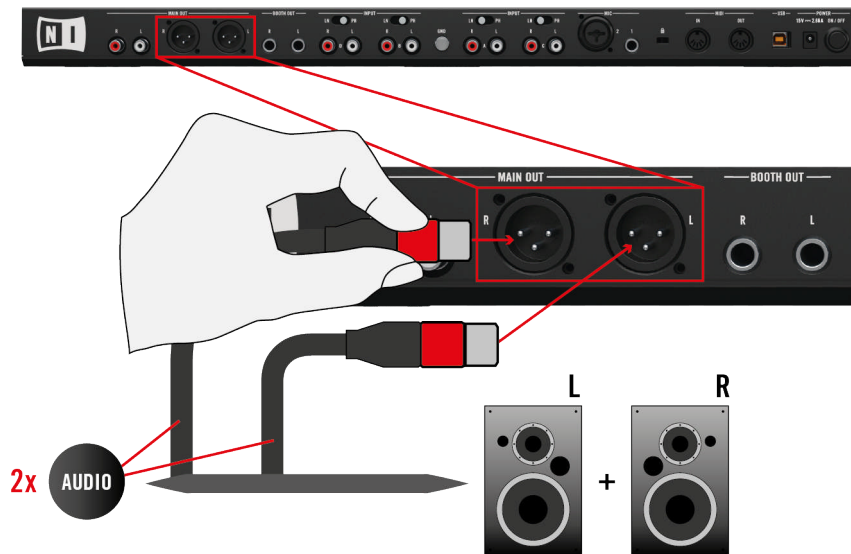
4.4 Connecting an Amplification System



Switch off your amplification system (active speakers or power amplifier), and set the **MAIN** knob & volume faders on the TRAKTOR KONTROL S8 to a minimum before you proceed.

To connect your power amplifier or active speakers to the TRAKTOR KONTROL S8:

1. Connect the **MAIN OUT** XLR (or RCA) outputs on the rear panel of the TRAKTOR KONTROL S8 to the inputs of your amplification system using matching cables.

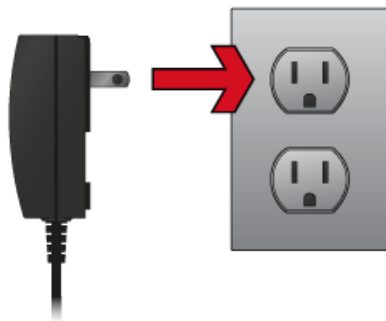


4.5 Connecting the Power Supply

1. Connect the device end of your power supply to the input on the rear panel of the TRAKTOR KONTROL S8.



2. Connect the plug of the power supply to a power outlet.



→ The TRAKTOR KONTROL S8 system is installed.

Continue reading with section [↑4.6, Final Preparations](#) and follow the instructions for the final preparations.

4.6 Final Preparations

It is recommended that you follow the below order when preparing your TRAKTOR KONTROL S8 for use:

1. Turn down the **MAIN**, and **CUE VOL** knobs on the TRAKTOR KONTROL S8 to a minimum level.
2. Press the **ON/OFF** button located on the TRAKTOR KONTROL S8's rear panel to turn on the device.



3. Turn on the amplification system (active speakers or power amplifier with passive speakers).
 4. Turn on your computer.
 5. Start the TRAKTOR software via the **Traktor** application icon in the installation folder.
- The TRAKTOR window opens with a two Track Deck and two Remix Deck setup enabled.

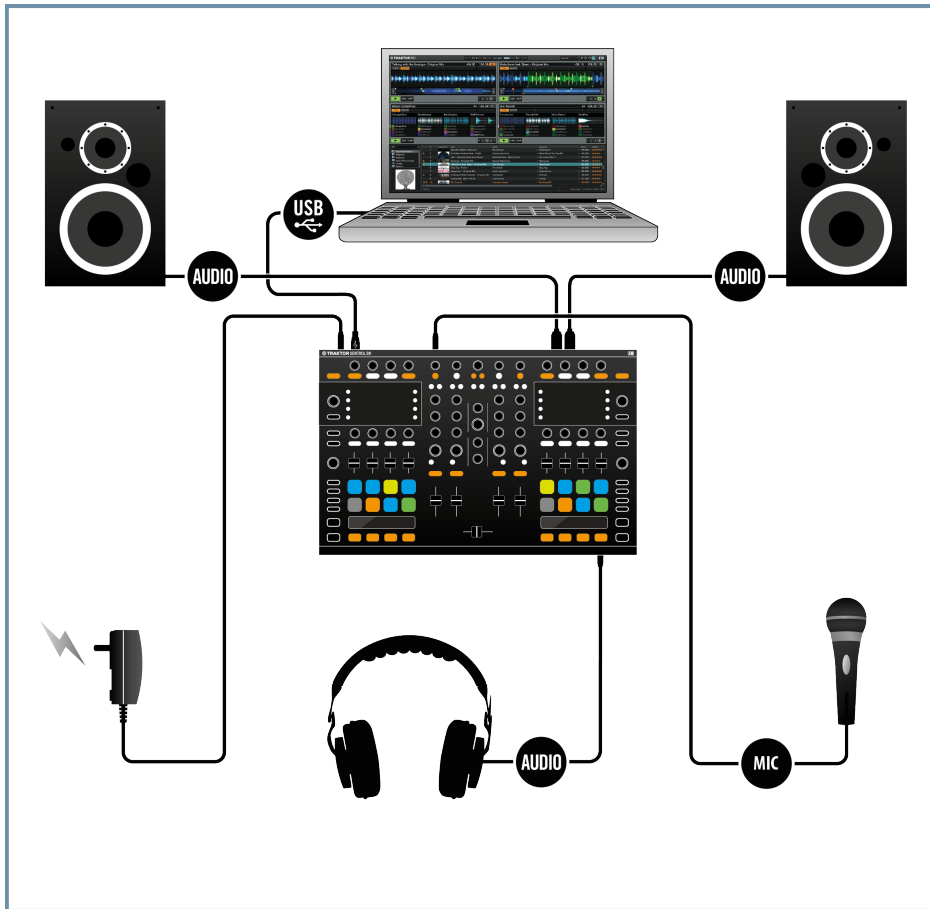
The TRAKTOR KONTROL S8 system is now up and running. For further information on browsing, loading, and playing tracks please refer to the TRAKTOR KONTROL S8 Manual.

5 Overview of further TRAKTOR KONTROL S8 Setups

This section provides some diagram examples of TRAKTOR KONTROL S8 setup scenarios:

5.1 Basic Setup with optional Microphone

The example below shows an overview of the connections required for a TRAKTOR KONTROL S8 basic setup with additional microphone.



TRAKTOR KONTROL S8 basic setup with optional microphone.

To connect a microphone:

- ▶ In the **MIC** section on the TRAKTOR KONTROL S8's rear panel, connect the microphone either to the XLR input or to the 6.3 mm input.

5.2 TRAKTOR SCRATCH PRO Setup

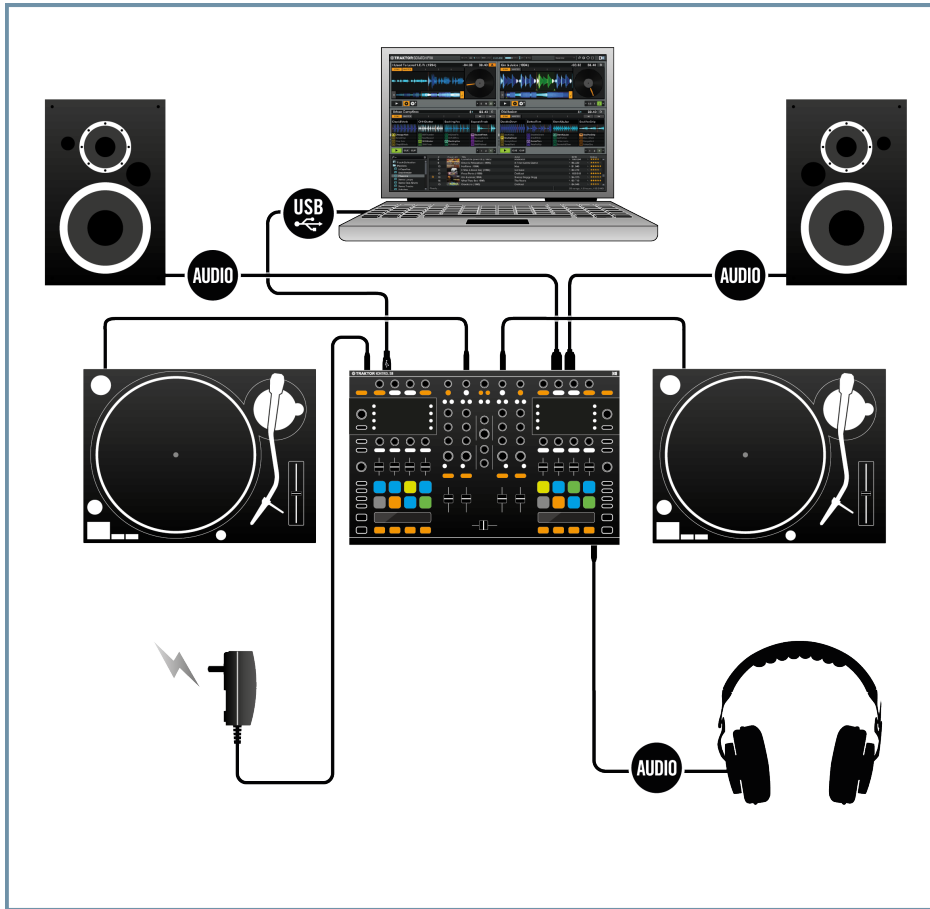
The example below shows an overview of the connections required for using TRAKTOR SCRATCH PRO 2 in conjunction with turntables and the TRAKTOR KONTROL S8. This setup example is ideal for those who want to retain physical control of TRAKTOR 's virtual decks via conventional turntables.



Refer to the TRAKTOR KONTROL S8 Manual for further information on using turntables with the TRAKTOR KONTROL S8 , in either TRAKTOR Mode or Direct Mode.



For more information on TRAKTOR SCRATCH PRO 2 related products, refer to: www.native-instruments.com/en/products/traktor/digital-vinyl/.



TRAKTOR SCRATCH PRO 2 setup.

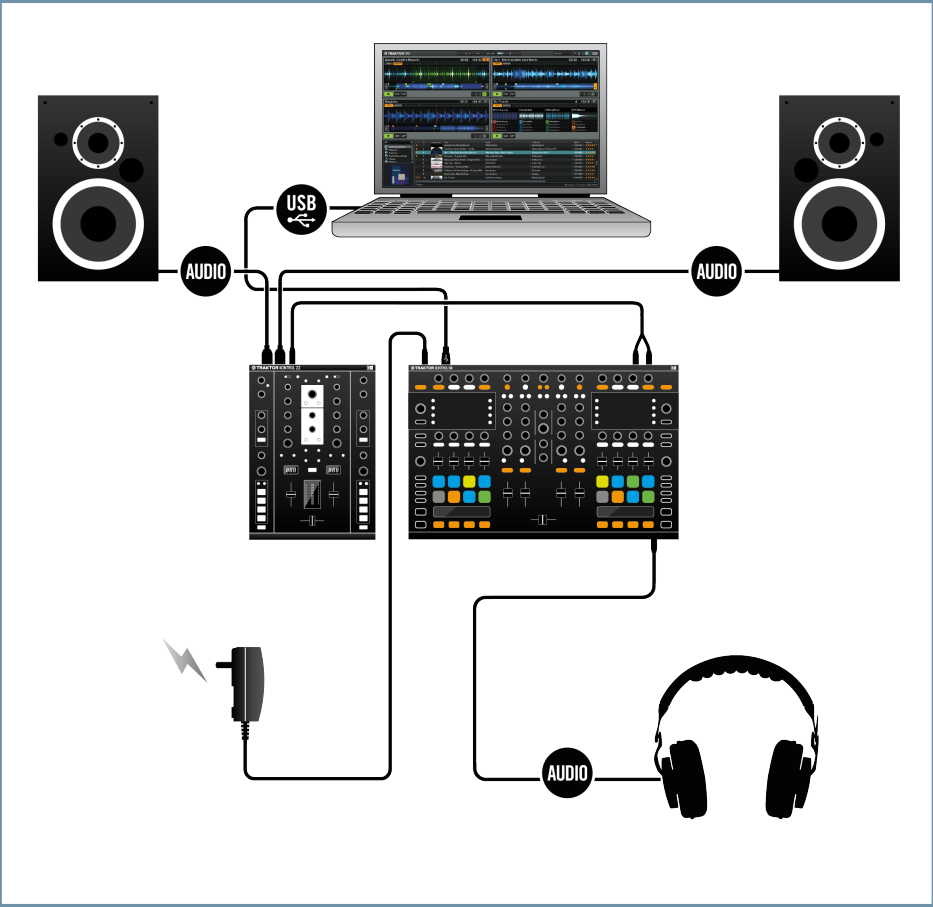
5.3 Additional Mixer Setup

The example below shows an overview of the connections required for using the TRAKTOR KONTROL S8 in conjunction with an additional mixer. This setup scenario is for those who want to use their TRAKTOR KONTROL S8 at a club, or festival for example. In an environment where there is already a main mixer providing the output, and it is best to avoid any breaks in

performance (or awkward silences), you can easily run the audio output from the TRAKTOR KONTROL S8 directly into an external mixer. To feed the TRAKTOR KONTROL S8's audio output to an external mixer:

- ▶ In the **MAIN OUT** section on the TRAKTOR KONTROL S8's rear panel, connect the XLR (or RCA) outputs to the XLR (or RCA) inputs on the external mixer.

The TRAKTOR KONTROL S8's balanced XLR outputs allow you to connect professional-grade cables, which are much more resistant to electrical interferences than unbalanced cables, especially over longer distances.



TRAKTOR KONTROL S8 with additional mixer setup.

6 What's Next

- For information on how to operate the TRAKTOR KONTROL S8 and how to use it with the TRAKTOR software, please refer to the TRAKTOR KONTROL S8 Getting Started, and the TRAKTOR KONTROL S8 Manual. You can access the Manual via the *Open Manual...* entry from the [Help](#) menu in the TRAKTOR software.
- For information on all TRAKTOR features, refer to the TRAKTOR Manual and the TRAKTOR Getting Started. You can access these via the *Open Manual...* entry from the [Help](#) menu in the TRAKTOR software.

7 Troubleshooting and FAQ

This section contains some of the most frequently asked questions and answers along with references to Knowledge Base articles for additional details. In order to find an article, please visit the Native Instruments website, navigate to the Knowledge Base in the Support section and enter the article number in the search field.

7.1 Installation Folder Not Found by an Update Installer

If you have manually moved the location of a Native Instruments application on your hard drive, the installer, upon attempting to run an update, will display an error message and abort the installation. You can correct the application path in SERVICE CENTER from the [Overview](#) tab. If an application cannot be found, a [Locate](#) button will appear on this tab.

- ▶ Click this button and browse to the actual location of the application.

7.2 Audio Clicks and Drop-outs When Playing Tracks

If you hear clicks and/or drop-outs when a track is playing, you might need to increase the latency setting of your TRAKTOR KONTROL S8. To learn how to do this, please refer to the TRAKTOR KONTROL S8 Manual, which thoroughly describes the TRAKTOR KONTROL S8 Control Panel—the tool that allows you to adjust the audio interface settings.

7.3 More Troubleshooting Resources

If none of the suggestions in this chapter covers your problem, the TRAKTOR Manual provides more detailed information on the topics discussed in this Setup Guide. Also check if the Knowledge Base has an answer:

<http://www.native-instruments.com/knowledge/>

8 Support

8.1 Knowledge Base / Online Support / Readme

To open the Knowledge Base / Online Support Form:

- ▶ Open the Service Center application and click on the [Support](#) button in the upper right corner. Here you will find direct links to the Native Instruments **Online Knowledge Base** and the **Online Support Form**.

The Online Knowledge Base gathers useful information about your Native Instruments product and can be of great help to solve possible issues you may encounter when working with Native Instruments products.

If no Knowledge Base entry matches your problem, or if the matching entry does not solve the problem, you can use the Online Support Form to contact the Technical Support team at Native Instruments. The Online Support Form will ask you to enter information about your hardware and software setup. This information is essential for our support team to be able to provide you with quality assistance.

When communicating with the Native Instruments support team, keep in mind that the more details you can provide about your hardware, your operating system, the version of the software you are running, and the problem you are experiencing, the better they will be able to help you. In your description, you should mention:

- How to reproduce the problem
- What you have already tried to fix the problem
- A description of your setup, including all hardware
- The brand and specifications of your computer

When installing new software or software updates, a **Readme file** is included that contains late breaking news and new information that was not yet included in the documentation. Please open and read this Readme file before contacting Technical Support.

8.2 Forum

In the Native Instruments User Forum you can discuss product features directly with other users and with experts moderating the forum:

<http://www.native-instruments.com/forum>.

8.3 Updates

Whenever you encounter problems, it is recommended that you first download and install any available software updates. Updates are released regularly to fix known problems and to continuously improve the software. The version number of your software is displayed in the [About](#) dialog for any Native Instruments application. This dialog can be opened by clicking on the NI logo in the upper right corner of the user interface. Alternatively, you can find the version numbers of all installed Native Instruments applications when showing the details for an application within the [Overview](#) tab of the Service Center. Updates are available on the [Update](#) tab in Service Center or on our website under:

<http://www.native-instruments.com/updates>.

9 Product Returns

Please contact our Technical Support team prior to returning an item. If your product needs to be returned, they will assign you an RA (Return Authorization) number to expedite the processing of your return.

Contact Native Instruments Technical Support

<http://www.native-instruments.com/support>