

Pioneer Dj

DJ Controller

DDJ-RX

 **rekordbox** rekordbox dj

<http://pioneerdj.com/support/>

The Pioneer DJ site shown above offers FAQs, information on software and various other types of information and services to allow you to use your product in greater comfort.

<http://rekordbox.com/>

For the latest version of the rekordbox software, access rekordbox.com and download the software from there.

Operating Instructions (Quick Start Guide)

IMPORTANT



The lightning flash with arrowhead symbol, within an equilateral triangle, is intended to alert the user to the presence of uninsulated "dangerous voltage" within the product's enclosure that may be of sufficient magnitude to constitute a risk of electric shock to persons.

CAUTION

**RISK OF ELECTRIC SHOCK
DO NOT OPEN**

CAUTION:
TO PREVENT THE RISK OF ELECTRIC SHOCK, DO NOT REMOVE COVER (OR BACK). NO USER-SERVICEABLE PARTS INSIDE. REFER SERVICING TO QUALIFIED SERVICE PERSONNEL.



The exclamation point within an equilateral triangle is intended to alert the user to the presence of important operating and maintenance (servicing) instructions in the literature accompanying the appliance.

D3-4-2-1-1b_A1_En

IMPORTANT



Ce symbole de l'éclair, placé dans un triangle équilatéral, a pour but d'attirer l'attention de l'utilisateur sur la présence, à l'intérieur du coffret de l'appareil, de "tensions dangereuses" non isolées d'une grandeur suffisante pour représenter un risque d'électrocution pour les êtres humains.

ATTENTION

**DANGER D'ÉLECTROCUTION
NE PAS OUVRIR**

ATTENTION :
POUR ÉVITER TOUT RISQUE D'ÉLECTROCUTION, NE PAS ENLEVER LE COUVERCLE (NI LE PANNEAU ARRIÈRE). AUCUNE PIÈCE RÉPARABLE PAR L'UTILISATEUR NE SE TROUVE À L'INTÉRIEUR. CONFIER TOUT ENTRETIEN À UN PERSONNEL QUALIFIÉ UNIQUEMENT.



Ce point d'exclamation, placé dans un triangle équilatéral, a pour but d'attirer l'attention de l'utilisateur sur la présence, dans les documents qui accompagnent l'appareil, d'explications importantes du point de vue de l'exploitation ou de l'entretien.

D3-4-2-1-1b_A1_Fr

IMPORTANT SAFETY INSTRUCTIONS

- 1) Read these instructions.
- 2) Keep these instructions.
- 3) Heed all warnings.
- 4) Follow all instructions.
- 5) Do not use this apparatus near water.
- 6) Clean only with dry cloth.
- 7) Do not block any ventilation openings. Install in accordance with the manufacturer's instructions. Do not install near any heat sources such as radiators, heat registers, stoves, or other apparatus (including amplifiers) that produce heat. Do not defeat the safety purpose of the polarized or grounding-type plug. A polarized plug has two blades with one wider than the other. A grounding type plug has two blades and a third grounding prong. The wide blade or the third prong are provided for your safety. If the provided plug does not fit into your outlet, consult an electrician for replacement of the obsolete outlet. Protect the power cord from being walked on or pinched particularly at plugs, convenience receptacles, and the point where they exit from the apparatus.
- 8) Only use attachments/accessories specified by the manufacturer.
- 9) Use only with the cart, stand, tripod, bracket, or table specified by the manufacturer, or sold with the apparatus. When a cart is used, use caution when moving the cart/apparatus combination to avoid injury from tip-over.
- 10) Unplug this apparatus during lightning storms or when unused for long periods of time.
- 11) Refer all servicing to qualified service personnel. Servicing is required when the apparatus has been damaged in any way, such as power-supply cord or plug is damaged, liquid has been spilled or objects have fallen into the apparatus, the apparatus has been exposed to rain or moisture, does not operate normally, or has been dropped.



D3-7-13-69_En

CAUTION

The **STANDBY/ON** switch on this unit will not completely shut off all power from the AC outlet. Since the power cord serves as the main disconnect device for the unit, you will need to unplug it from the AC outlet to shut down all power. Therefore, make sure the unit has been installed so that the power cord can be easily unplugged from the AC outlet in case of an accident. To avoid fire hazard, the power cord should also be unplugged from the AC outlet when left unused for a long period of time (for example, when on vacation).

D3-4-2-2a*_A1_En

ATTENTION

L'interrupteur **STANDBY/ON** de cet appareil ne coupe pas complètement celui-ci de sa prise secteur. Comme le cordon d'alimentation fait office de dispositif de déconnexion du secteur, il devra être débranché au niveau de la prise secteur pour que l'appareil soit complètement hors tension. Par conséquent, veillez à installer l'appareil de telle manière que son cordon d'alimentation puisse être facilement débranché de la prise secteur en cas d'accident. Pour éviter tout risque d'incendie, le cordon d'alimentation sera débranché au niveau de la prise secteur si vous prévoyez une période prolongée de non utilisation (par exemple avant un départ en vacances).

D3-4-2-2a*_A1_Fr

Operating Environment

Operating environment temperature and humidity: +5 °C to +35 °C (+41 °F to +95 °F); less than 85 %RH (cooling vents not blocked)

Do not install this unit in a poorly ventilated area, or in locations exposed to high humidity or direct sunlight (or strong artificial light).

D3-4-2-1-7c*_A2_En

Milieu de fonctionnement

Température et humidité du milieu de fonctionnement : De +5 °C à +35 °C (de +41 °F à +95 °F) ; Humidité relative inférieure à 85 % (orifices de ventilation non obstrués)

N'installez pas l'appareil dans un endroit mal ventilé ou un lieu soumis à une forte humidité ou en plein soleil (ou à une forte lumière artificielle).

D3-4-2-1-7c*_A1_Fr

WARNING

This equipment is not waterproof. To prevent a fire or shock hazard, do not place any container filled with liquid near this equipment (such as a vase or flower pot) or expose it to dripping, splashing, rain or moisture.

D3-4-2-1-3_A1_En

AVERTISSEMENT

Cet appareil n'est pas étanche. Pour éviter les risques d'incendie et de décharge électrique, ne placez près de lui un récipient rempli d'eau, tel qu'un vase ou un pot de fleurs, et ne l'exposez pas à des gouttes d'eau, des éclaboussures, de la pluie ou de l'humidité.

D3-4-2-1-3_A1_Fr

WARNING

To prevent a fire hazard, do not place any naked flame sources (such as a lighted candle) on the equipment.

D3-4-2-1-7a_A1_En

AVERTISSEMENT

Pour éviter les risques d'incendie, ne placez aucune flamme nue (telle qu'une bougie allumée) sur l'appareil.

D3-4-2-1-7a_A1_Fr

When using this product, confirm the safety information shown on the bottom of the unit.

D3-4-2-2-4_B1_En

Lorsque vous utilisez ce produit, vérifiez les informations concernant la sécurité sous l'appareil.

D3-4-2-2-4_B1_Fr

This product is for general household purposes. Any failure due to use for other than household purposes (such as long-term use for business purposes in a restaurant or use in a car or ship) and which requires repair will be charged for even during the warranty period.

K041_A1_En

NOTE:

This equipment has been tested and found to comply with the limits for a Class B digital device, pursuant to Part 15 of the FCC Rules. These limits are designed to provide reasonable protection against harmful interference in a residential installation. This equipment generates, uses, and can radiate radio frequency energy and, if not installed and used in accordance with the instructions, may cause harmful interference to radio communications. However, there is no guarantee that interference will not occur in a particular installation. If this equipment does cause harmful interference to radio or television reception, which can be determined by turning the equipment off and on, the user is encouraged to try to correct the interference by one or more of the following measures:

- Reorient or relocate the receiving antenna.
- Increase the separation between the equipment and receiver.
- Connect the equipment into an outlet on a circuit different from that to which the receiver is connected.
- Consult the dealer or an experienced radio/TV technician for help.

D8-10-1-2_A1_En

IMPORTANT NOTICE

THE MODEL NUMBER AND SERIAL NUMBER OF THIS EQUIPMENT ARE ON THE REAR OR BOTTOM. RECORD THESE NUMBERS ON PAGE 19 FOR FUTURE REFERENCE.

D36-AP9-3*_A1_En

Information to User

Alterations or modifications carried out without appropriate authorization may invalidate the user's right to operate the equipment.

D8-10-2_A1_En

WARNING: This product contains chemicals known to the State of California and other governmental entities to cause cancer and birth defects or other reproductive harm.

Wash hands after handling.

D36-P5_C1_En

POWER-CORD CAUTION

Handle the power cord by the plug. Do not pull out the plug by tugging the cord and never touch the power cord when your hands are wet as this could cause a short circuit or electric shock. Do not place the unit, a piece of furniture, etc., on the power cord, or pinch the cord. Never make a knot in the cord or tie it with other cords. The power cords should be routed such that they are not likely to be stepped on. A damaged power cord can cause a fire or give you an electrical shock. Check the power cord once in a while. When you find it damaged, ask your nearest service center or your dealer for a replacement.

S002*_A1_En

The Safety of Your Ears is in Your Hands

Get the most out of your equipment by playing it at a safe level – a level that lets the sound come through clearly without annoying blaring or distortion and, most importantly, without affecting your sensitive hearing. Sound can be deceiving. Over time, your hearing “comfort level” adapts to higher volumes of sound, so what sounds “normal” can actually be loud and harmful to your hearing. Guard against this by setting your equipment at a safe level BEFORE your hearing adapts.

ESTABLISH A SAFE LEVEL:

- Set your volume control at a low setting.
- Slowly increase the sound until you can hear it comfortably and clearly, without distortion.
- Once you have established a comfortable sound level, set the dial and leave it there.

BE SURE TO OBSERVE THE FOLLOWING GUIDELINES:

- Do not turn up the volume so high that you can't hear what's around you.
- Use caution or temporarily discontinue use in potentially hazardous situations.
- Do not use headphones while operating a motorized vehicle; the use of headphones may create a traffic hazard and is illegal in many areas.

S001a_A1_En

FEDERAL COMMUNICATIONS COMMISSION DECLARATION OF CONFORMITY

This device complies with part 15 of the FCC Rules. Operation is subject to the following two conditions: (1) This device may not cause harmful interference, and (2) this device must accept any interference received, including interference that may cause undesired operation.

Product Name: DJ CONTROLLER

Model Number: DDJ-RX

Responsible Party Name: PIONEER ELECTRONICS (USA) INC.
SERVICE SUPPORT DIVISION

Address: 1925 E. DOMINGUEZ ST. LONG BEACH, CA 90810-1003, U.S.A.

Phone: 1-800-421-1404

URL: <http://www.pioneerelectronics.com>

D8-10-4*_C1_En

Before start

How to read this manual

- Thank you for buying this Pioneer DJ product.
This guide provides a brief description of the procedures up until connecting the unit to your computer and outputting audio. For the detailed procedures, refer to the operating instructions.
For instructions on operating the rekordbox software, see the rekordbox software's manual.
Be sure to read both this leaflet and the operating instructions! Both documents include important information that you must understand before using this product.
After you have finished reading the instructions, put them away in a safe place for future reference.
— For instructions on acquiring the operating instructions, see *Acquiring the manual* (p. 5).
- In this manual, names of screens and menus displayed on the product and on the computer screen, as well as names of buttons and terminals, etc., are indicated within brackets. (e.g.: [CUE] button, [Files] panel, [MIC1] terminal)
- Please note that the screens and specifications of the software described in this manual as well as the external appearance and specifications of the hardware are currently under development and may differ from the final specifications.
- Please note that depending on the operating system version, web browser settings, etc., operation may differ from the procedures described in this manual.

Features

This unit is an all-in-one DJ controller designed specifically for "rekordbox dj". It's interfaces incorporating various controls such as "BIG JOG", "PERFORMANCE PADS" and 4-channel mixer are positioned with room to spare to allow for more individualistic DJ performances using "rekordbox dj". Also, the unit provides "SOUND COLOR FX" and "SEQUENCER" functions so that original arrangements can be added to the music being played back. Furthermore, numerous input and output terminals support a variety of DJ styles. Featuring aluminum material for the top panel, the design makes the unit look high quality, which is appropriate in a variety of scenes such as nightclubs, home parties, etc.

What's in the box

- AC adapter
- Power plug
- USB cable
- Operating Instructions (Quick Start Guide) (This document)
- rekordbox dj license key

Cautions

The license key cannot be reissued. Be careful not to lose it.

Acquiring the manual

Various instructions are sometimes provided as files in PDF format. Adobe® Reader® must be installed in order to view PDF format files.

Acquiring this unit's Operating Instructions

1 Launch a web browser on the computer and access the Pioneer DJ site below.

<http://www.pioneerdj.com/>

2 Click [Support].

3 Click [FIND TUTORIALS & MANUALS].

4 Click [DDJ-RX] in the [CONTROLLER] category.

5 Click on the required language on the download page.

Downloading the rekordbox software manual

1 Launch a web browser on the computer and access the rekordbox.com site below.

<http://rekordbox.com/>

2 Download the software manual from the rekordbox software manual download page.

For inquiries on rekordbox, see "rekordbox.com" indicated above.

Installing the software

Before installing the software

The rekordbox software and driver software are not included. Access "rekordbox.com" for the rekordbox software and Pioneer DJ site for the driver software, and download the software.

<http://rekordbox.com/>
<http://www.pioneerdj.com/>

- The user is responsible for preparing the computer, network devices and other elements of the Internet usage environment required for a connection to the Internet.

About the driver software (Windows)

This driver software is an exclusive ASIO driver for outputting audio signals from the computer.

- There is no need to install the driver software when using Mac OS X.

❖ Obtaining the driver software

1 Launch a web browser on the computer and access the Pioneer DJ site below.

<http://www.pioneerdj.com/>

2 Click [Support].

3 Click [FIND SOFTWARE & FIRMWARE UPDATES].

4 Click [DDJ-RX] in the [CONTROLLER] category.

5 Click [Drivers].

6 Click [Download link] and save the file.

About rekordbox and rekordbox dj

- rekordbox is a composite software that enables track management and DJ performances.
- The DJ performance function of rekordbox is called rekordbox dj. Enter the license key included with this product to use rekordbox dj.

Minimum operating environment

| Supported operating systems | | CPU and required memory |
|---|---|--|
| Mac OS X: 10.10, 10.9 and 10.8 | | Intel® processor, Core™ i3, i5, or i7 4 GB or more of RAM |
| Windows: Windows 8, Windows 8.1, Windows 8 Pro, Windows 8.1 | 32-bit version | Intel® processor, Core™ i3, i5, or i7 4 GB or more of RAM |
| Pro, Windows 7 Home Premium, Professional, Ultimate | 64-bit version | Intel® processor, Core™ i3, i5, or i7 4 GB or more of RAM |
| Others | | |
| USB port | A USB 2.0 port is required to connect the computer with this unit. | |
| Display resolution | Resolution of 1280 x 768 or greater | |
| Internet connection | An Internet connection is required for registering the rekordbox user account and downloading the software. | |

- For information on the latest system requirements, compatibility, and supported operating systems of rekordbox, see [System Requirements] of "rekordbox.com" below.
<http://rekordbox.com/>
- Operation is not guaranteed on all computers, even if all the required operating environment conditions indicated here are fulfilled.
- Depending on the computer's power-saving settings, etc., the CPU and hard disk may not provide sufficient processing capabilities. For notebook computers in particular, make sure the computer is in the proper conditions to provide constant high performance (for example by keeping the AC power connected) when using rekordbox.
- Use of the Internet requires a separate contract with a provider offering Internet services and payment of provider fees.
- Use the latest version/service pack of the operating system.

❖ Obtaining the rekordbox software

1 Launch a web browser on the computer and access the rekordbox.com site below.

<http://rekordbox.com/>

2 Click [Download] in the [Download] menu of "rekordbox.com".

The rekordbox download page is displayed.

3 Click the download banner.

Downloading of rekordbox starts.

- If you are already using rekordbox 3, update the software to the latest version to use rekordbox dj.

About the installation procedure

The installation procedure depends on the operating system (OS) on the computer you are using.

For Windows

After installing the driver software, install the rekordbox software.

For Mac OS X

Only install the rekordbox software.

❖ Installation Procedure (Windows)

Do not connect this unit and the computer until installation is completed.

- Log on as the user which was set as the computer's administrator before installing.
- If any other programs are running on the computer, quit them.

1 Double-click the downloaded driver software (DDJ_RX_Driver_X.XXX.exe).

2 Proceed with installation according to the instructions on the screen.

If [Windows Security] appears on the screen while the installation is in progress, click [Install this driver software anyway] and continue with the installation.

When the installation program is completed, a completion message appears.

After installing the driver software, install the rekordbox software.

3 Unzip the downloaded rekordbox software file.

4 Double-click the unzipped software file to launch the installer.

5 Read the terms of the license agreement carefully, and if you agree, select [Agree], then click [Next].

- If you do not agree to the contents of the license agreement, click [Cancel] to cancel installation.

After the installation destination is specified, the installation starts.

6 If the installation completion screen appears, click [Finish] to close the rekordbox installer.

❖ Installation procedure (Mac OS X)

Do not connect this unit and the computer until installation is completed.

- If any other programs are running on the computer, quit them.

1 Unzip the downloaded rekordbox software file.

2 Double-click the unzipped software file to launch the installer.

3 Read the terms of the license agreement carefully, and if you agree, click [Agree].

- If you do not agree to the contents of the license agreement, click [Disagree] to quit installation.

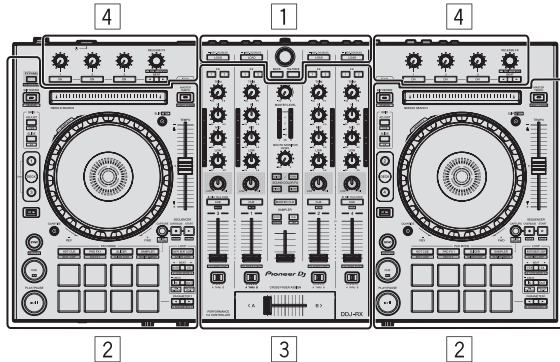
Proceed by following the instructions on the screen.

4 If the installation completion screen appears, click [Close] to close the rekordbox installer.

Part names and functions

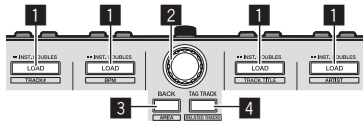
For further details on each unit, refer to the Operating Instructions and the rekordbox software manual.

- For instructions on obtaining the Operating Instructions and the rekordbox software manual, see *Acquiring the manual* on page 5.



- 1 Browser section**
- 2 Deck section**
- 3 Mixer section**
- 4 Effect section**

Browser section



1 LOAD button

The selected tracks are loaded to the respective decks.

[SHIFT] + press:
Sorts the track list when one of the [LOAD] buttons is pressed.

2 Rotary selector

Turn:
The cursor moves vertically.

Press:
Moves the cursor between the tree view and track list each time the rotary selector is pressed.

- When the playlist palette is displayed, the cursor moves between playlists in addition to the tree view and track list.
- The tree view, track list and playlist palette are in the browse section of rekordbox dj. For each function, see the rekordbox software's manual.

3 BACK button

Moves the cursor between the tree view and track list each time the button is pressed.

- When the playlist palette is displayed, the cursor moves between playlists in addition to the tree view and track list.
- The tree view, track list and playlist palette are in the browse section of rekordbox dj. For each function, see the rekordbox software's manual.

[SHIFT] + press:
Switches the display of the browse section of rekordbox dj.

4 TAG TRACK button

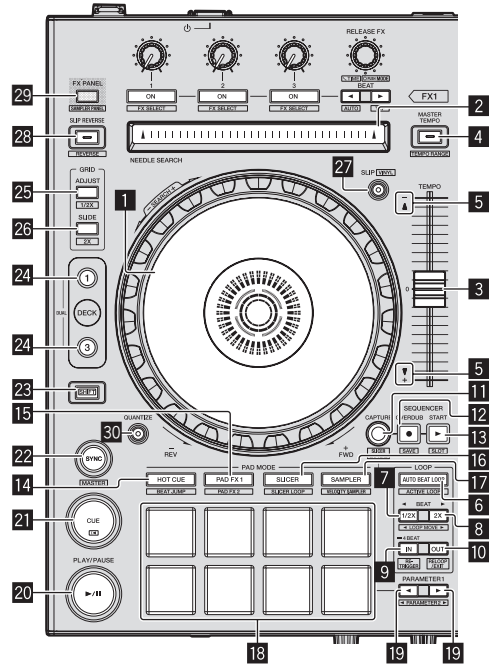
Adds tracks to the tag list.

- You can temporarily collect the music files to be played in the rekordbox tag list separately from the playlist.

[SHIFT] + press:

Displays the tracks whose BPM and key are similar to those of the track currently being played as the candidate to be played next on the screen.

Deck section



1 Jog dial

Turn top:
When the vinyl mode is on, the scratch operation is possible.

Turn outer section:
The pitch bend operation (adjustment of the playing speed) is possible.

[SHIFT] + Turn top:
Skips the playback position.

2 NEEDLE SEARCH pad

By touching the pad during pause, you can jump to the desired position in the track loaded in the deck.

3 TEMPO slider

Use this to adjust the track playing speed.

4 MASTER TEMPO button

Use this to turn the master tempo function on and off.

- When the master tempo function is on, the key does not change even when the playing speed is changed with the [TEMPO] slider.

[SHIFT] + press:
The [TEMPO] slider's range of variation switches each time the button is pressed.

5 Takeover indicator

6 AUTO BEAT LOOP button

Turns the auto beat loop function on and off.

[SHIFT] + press:

Switches the loop saved in the track between active and non-active. (Active Loop)

7 LOOP 1/2X button

Halves the loop playback length.

[SHIFT] + press:

During loop playback, moves the loop to the left by the amount equal to its length. (Loop Move)

8 LOOP 2X button

Doubles the loop playback length.

[SHIFT] + press:

During loop playback, moves the loop to the right by the amount equal to its length. (Loop Move)

9 LOOP IN button

Loop In Point is set.

[SHIFT] + press:

The track returns to the set loop in point and loop playback continues.

Press for over 1 second:

Turns the auto 4-beat loop on.

10 LOOP OUT button

The loop out point is set, and loop playback begins.

[SHIFT] + press:

Cancels loop playback. (Loop Exit)

After loop playback is canceled, playback returns to the previously set loop in point and loop playback resumes. (Reloop)

11 CAPTURE button

Press a performance pad while pressing the [CAPTURE] button to load the active loop to the sampler slot.

[SHIFT] + press:

Loads the sections in the target area of slicer or slicer loop to separate sampler slots.

- For detailed instructions on slicer and slicer loop, see the rekordbox software's manual.

12 SEQUENCER OVERDUB button

Press:

Turns the sequencer on standby for recording.

Recording operation information (sequence) is started if the sampler is operated when the sequencer is on standby for recording. Press the button again to stop recording.

[SHIFT] + press:

Saves the recorded sequence to the sequencer slot.

13 SEQUENCER START button

Starts the sequence playback when the sequence recording is stopped.

Overdubs the new sequence onto the sequence being played back while recording a sequence.

[SHIFT] + press:

Selects the sequencer slot.

14 HOT CUE mode button

Sets the hot cue mode.

[SHIFT] + press:

Sets the beat jump mode.

15 PAD FX1 mode button

Sets the pad FX mode 1.

[SHIFT] + press:

Sets the pad FX mode 2.

16 SLICER mode button

Sets the slicer mode.

[SHIFT] + press:

Sets the slicer loop mode.

17 SAMPLER mode button

Sets the sampler mode.

[SHIFT] + press:

Sets the velocity sampler mode.

18 Performance pads

Controls the "hot cue", "pad FX", "slicer", "sampler" and other functions.

19 PARAMETER◀ button, PARAMETER▶ button

Sets parameters for the "pad FX", "slicer", "sampler" and other functions.

20 PLAY/PAUSE ▶/II button

Use this to play/pause tracks.

21 CUE button

Sets, plays and calls out cue points.

[SHIFT] + press:

Returns the playback position to the beginning of the track.

22 SYNC button

Synchronizes with the tempos (pitches) and beat grids of the deck set as the master for synchronization automatically.

[SHIFT] + press:

Sets the deck whose button is pressed as the master deck for synchronization.

23 SHIFT button

When another button is pressed while pressing the [SHIFT] button, a different function is called out.

- For details on operation using the [SHIFT] button, see the Operating Instructions.

24 DECK button

Switches the deck to be operated.

Pressing the [DECK3] button while holding down the [DECK1] button or pressing the [DECK1] button while holding down the [DECK3] button:

Turns on DUAL DECK mode on the left deck.

Pressing the [DECK4] button while holding down the [DECK2] button or pressing the [DECK2] button while holding down the [DECK4] button:

Turns on DUAL DECK mode on the right deck.

25 GRID ADJUST button

When the jog dial is turned while pressing the [GRID ADJUST] button, the beat grid interval can be adjusted.

[SHIFT] + press:

The BPM value is divided by 1/2 (doubling the beat grid's spacing).

26 GRID SLIDE button

When the jog dial is turned while pressing the [GRID SLIDE] button, the overall beat grid can be slid to the left or right.

[SHIFT] + press:

The BPM value is multiplied by 2 (reducing the beat grid's spacing by 1/2).

27 SLIP button

Turns the slip mode on and off.

[SHIFT] + press:

Turns the vinyl mode on and off.

28 SLIP REVERSE button

Plays the track in the reverse direction while the **[SLIP REVERSE]** button is pressed, and resumes normal playback when the button is released.

Slip reverse play is automatically canceled after 8 beats have elapsed even if the **[SLIP REVERSE]** button is kept pressed. The playback returns to normal after reverting to the background.

[SHIFT] + press:

Starts reverse playback. When the **[SHIFT]** and **[SLIP REVERSE]** buttons are pressed again, reverse playback is canceled and normal playback resumes.

29 FX PANEL button

Displays the FX panel.

[SHIFT] + press:

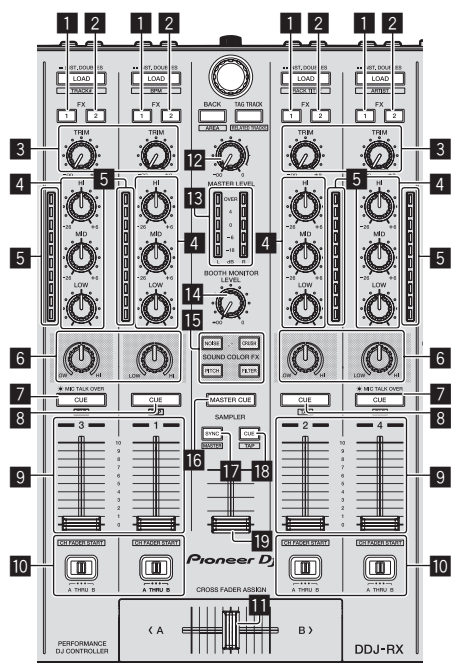
Displays the sampler panel.

30 QUANTIZE button

Turns the quantize function on.

For example, when the quantize function is turned on, the point is automatically set to the nearest beat position when a hot cue is set.

- The resolution of the quantized beat can be selected in the **[Preferences]** of rekordbox.

Mixer section**1 FX 1 assign button**

Turns the effect unit FX1 on/off.

2 FX 2 assign button

Turns the effect unit FX2 on/off.

3 TRIM control

Adjusts the output size.

4 EQ (HI, MID, LOW) controls

Boosts or cuts frequencies.

5 Channel Level Indicator

Displays the sound level of the respective channels before passing through the channel faders.

6 COLOR control

This changes the parameters of the SOUND COLOR FX of the different channels.

7 Headphones CUE/MIC TALK OVER button

The sound of channels for which the headphones **[CUE]** button is pressed is output to the headphones.

When the **[INPUT SELECT]** switch for Channel 3 or Channel 4 is set to **[MIC1]** or **[MIC2]**, the talk over function can be turned on/off using the switch.

[SHIFT] + press:

The track's tempo can be set by tapping the button. (Tap function)

8 Headphones CUE button

The sound of channels for which the headphones **[CUE]** button is pressed is output to the headphones.

[SHIFT] + press:

The track's tempo can be set by tapping the button. (Tap function)

9 Channel fader

Move:

Adjusts the level of audio signals output in each channel.

[SHIFT] + move:

Use the channel fader start function.

10 Crossfader Assign Switch

Assigns the channel output to the crossfader.

11 Crossfader

Outputs the sound assigned with the crossfader assign switch.

[SHIFT] + move:

Uses the crossfader start function.

12 MASTER LEVEL control

Adjusts the master sound level output.

13 Master level indicator

Displays the master output's audio level.

14 Booth monitor level control

Adjusts the level of audio signals output from the **[BOOTH OUT]** terminal.

15 SOUND COLOR FX buttons

Turns **SOUND COLOR FX** on and off.

16 MASTER CUE button

Turns monitoring of the master output's sound on and off.

17 SAMPLER SYNC button

Synchronizes the sampler deck's tempo with the master deck's tempo.

- Only a sampler slot with the PLAY mode set to **[Loop]** synchronizes the tempo with the master deck's tempo.

[SHIFT] + press:

Sets the sampler deck as the master for synchronization.

18 SAMPLER CUE button

Turns monitoring of the sampler deck's sound on or off.

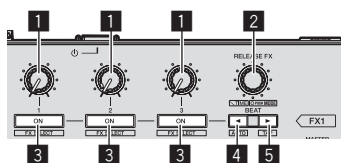
[SHIFT] + press:

Sets the sampler deck's tempo by tapping the button.

19 SAMPLER VOLUME fader

Adjusts the sampler's overall sound level.

Effect section



1 Effect parameter controls

Adjusts the beat FX parameter.

2 RELEASE FX control

Turn:

Switches the types of release FX.

Press:

The release FX is on while the control is pressed.

- If the release FX turns on, the beat FX in the same effect unit turns off.

[SHIFT] + turn:

Adjusts the beat FX time parameter.

[SHIFT] + press:

Switches the beat FX mode.

3 Effect parameter buttons

Turns the beat FX on and off or switches the parameters.

[SHIFT] + press:

Switches the types of beat FX.

4 BEAT ◀ button

Decreases the beat fraction for synchronizing the beat FX effect sound each time the button is pressed.

[SHIFT] + press:

Sets the beat FX tempo mode to the BPM auto mode. The track's BPM value is used as the basis for the effect's tempo.

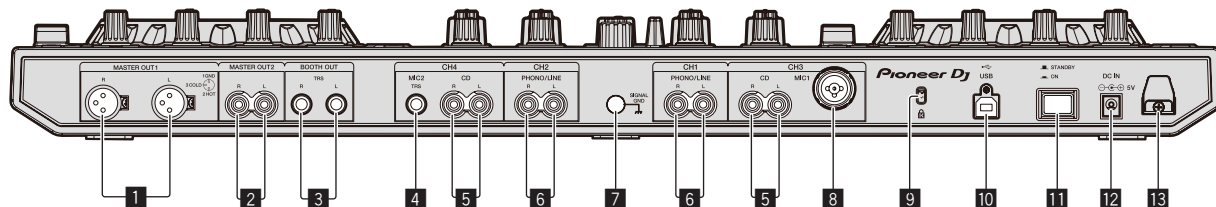
5 BEAT ▶ button

Increases the beat fraction for synchronizing the beat FX effect sound each time the button is pressed.

[SHIFT] + press:

Sets the beat FX tempo mode to the BPM tap mode. The BPM value used as the basis for beat FX is calculated by the interval at which the button is tapped.

Rear panel



1 MASTER OUT 1 terminals

Connect powered speakers, etc., here.

2 MASTER OUT 2 terminals

Connect to a power amplifier, etc.

3 BOOTH OUT terminals

Output terminals for a booth monitor, compatible with balanced or unbalanced output for a TRS connector.

4 MIC2 terminal

Connects a microphone here.

5 CD terminals

Connect to a DJ player or other line level device.

6 PHONO/LINE input terminals

Connect a phono level output device (analog player (for MM cartridges), etc.) or a line level output device (DJ player, etc.) here. Switch the terminals' function according to the connected device using the [INPUT SELECT] switch on this unit's front panel.

7 SIGNAL GND terminal

Connects an analog player's ground wire here. This helps reduce noise when the analog player is connected.

8 MIC1 terminal

Connects a microphone here.

9 Kensington security slot

10 USB terminal

Connect to a computer.

11 STANDBY/ON switch

This switches this unit's power between on and standby.

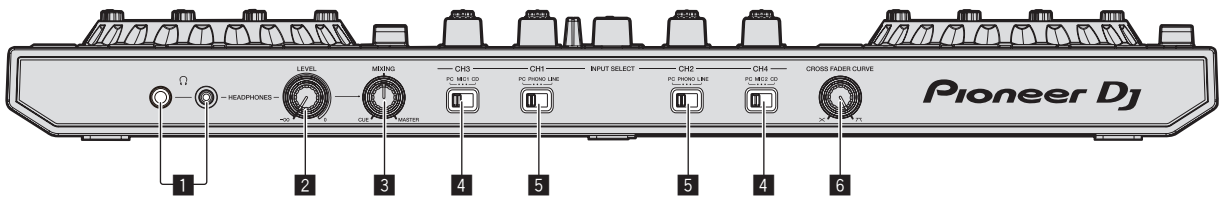
12 DC IN terminal

Connect to a power outlet using the included AC adapter (with the power plug mounted).

13 Cord hook

Catch the AC adapter's power cord and USB cable on this hook when using this unit.

Front panel



1 PHONES jacks

Connect headphones here.
Both stereo phone plugs (Ø 6.3 mm) and stereo mini phone plugs (Ø 3.5 mm) can be used.

2 HEADPHONES LEVEL control

Adjusts the audio level output from the [PHONES] jack.

3 HEADPHONES MIX control

Adjusts the balance of the monitor volume between the sound of the channels for which the headphones [CUE] button is pressed and the sound of the master channel.

4 INPUT SELECT switch

Selects the input source of each channel from the components connected to this unit.

- [PC]: Select this to use the track loaded in the rekordbox dj deck.
- [MIC1] or [MIC2]: Select one of these to use the microphone connected to the [MIC1] or [MIC2] terminal.
- [CD]: Select this to use a line level output device (DJ player, etc.) connected to the [CD] terminals.

5 INPUT SELECT switch

Selects the input source of each channel from the components connected to this unit.

- [PC]: Select this to use the track loaded in the rekordbox dj deck.
- [PHONO]: Select this to use a phono level (for MM cartridges) output device (analog player, etc.) connected to the [PHONO/LINE] input terminals.
- [LINE]: Select this to use a line level output device (DJ player, etc.) connected to the [PHONO/LINE] input terminals.

6 CROSS FADER CURVE selector switch

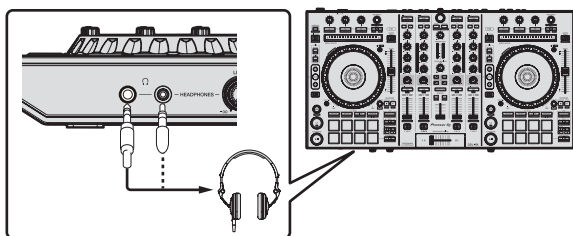
This switches the crossfader curve characteristics.

Operation

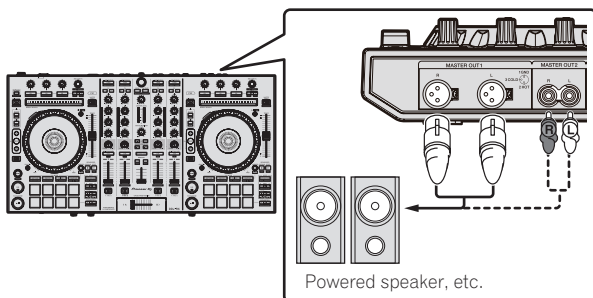
- Wait until all connections between devices have been completed before connecting the AC adapter. Be sure to turn off the power and unplug the AC adapter from the power outlet before making or changing connections between devices. Refer to the operating instructions for the component to be connected.
- Only use the AC adapter included with this unit.
- Power is supplied to this unit by the AC adapter.
- Connect this unit and the computer directly using the included USB cable.
- A USB hub cannot be used.

Connections

1 Connect headphones to one of the [PHONES] terminals.

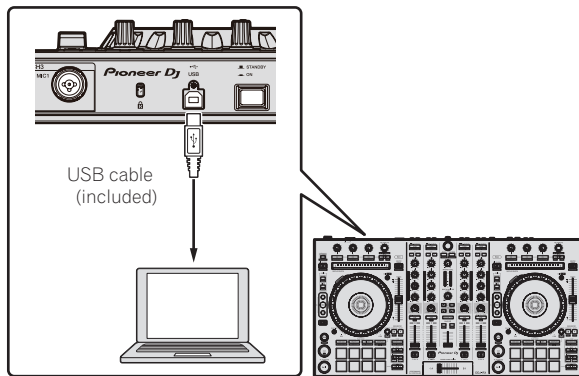


2 Connect powered speakers, a power amplifier, components, etc., to the [MASTER OUT 1] or [MASTER OUT 2] terminals.



- To output the sound from the [BOOTH OUT] terminals, connect speakers or other devices to the [BOOTH OUT] terminals.
- For details on connecting the input/output terminals, see the Operating Instructions.

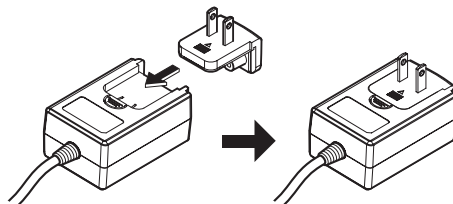
3 Connect this unit to your computer via a USB cable.



4 Turn on the computer's power.

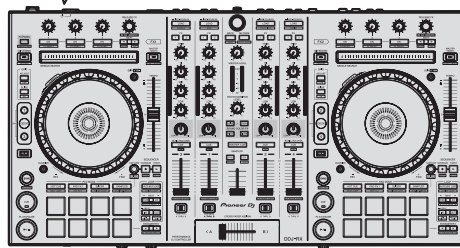
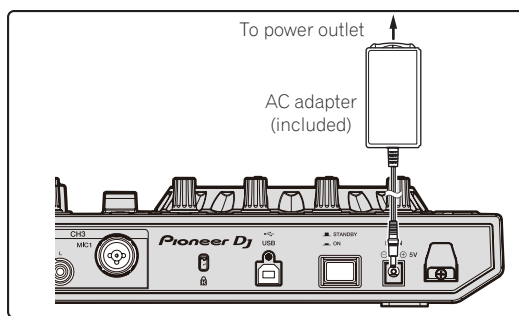
5 Connect the power plug to the AC adapter.

Slide the power plug into the AC adapter's guide rails as shown on the diagram and press in until a click is heard.

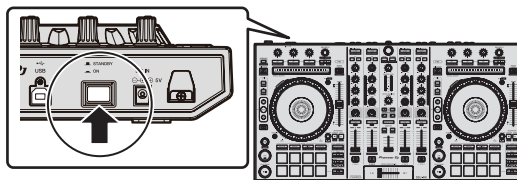


- For detailed cautions on the AC adapter, see *About the AC adapter* (p. 15).
- The shape of the plug differs according to the region in which the unit is sold.

6 Connect the AC adapter.



7 Press the [STANDBY/ON] switch on this unit's rear panel to turn this unit's power on.



Turn on the power of this unit.

- For Windows users
The message [Installing device driver software] may appear when this unit is first connected to the computer or when it is connected to a different USB port on the computer. Wait a while until the message [Your devices are ready for use] appears.

8 Turn on the power of the devices connected to the output terminals (powered speakers, power amplifier, components, etc.).

- When a microphone, DJ player or other external device is connected to input terminals, the power of that device also turns on.

Starting the system

Launching rekordbox

This manual consists mainly of explanations of functions of this unit as hardware. For detailed instructions on operating rekordbox dj, see the rekordbox software's manual.

For Windows 7

Click [All Programs] > [Pioneer] > [rekordbox X.X.X] > [rekordbox X.X.X] from the Windows [Start] menu.

For Windows 8.1/8

Click [rekordbox X.X.X] from [Apps view].

For Mac OS X

Open the [Applications] folder in Finder, then click [rekordbox].

❖ Activate rekordbox dj.

When the rekordbox software is started for the first time, operations such as the rekordbox dj activation are required.

1 Prepare the license key.

The rekordbox dj license key provided with this unit is required to activate rekordbox dj.

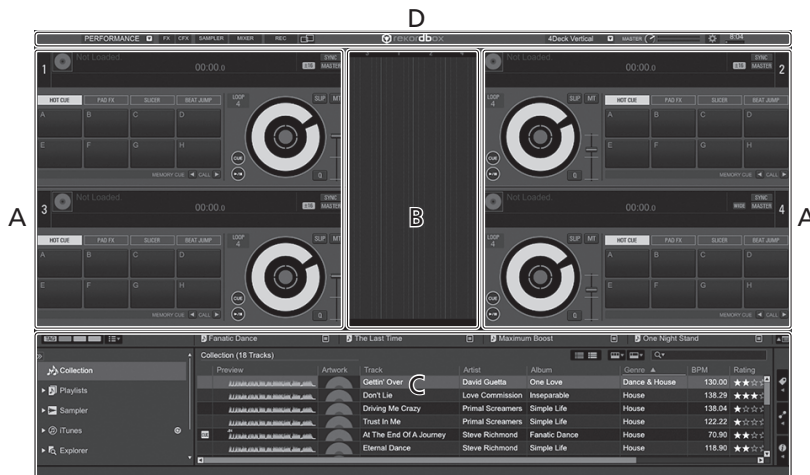
- There is no need for this product's users to purchase the rekordbox dj license key separately.

2 Activate rekordbox dj.

For instructions on activating rekordbox dj, see the rekordbox software's manual.

rekordbox dj screen on the computer after the activation

- If this screen does not appear, select [PERFORMANCE] from the menu at the top of the screen.



A Track deck section

The track information (the name of the loaded track, artist name, BPM, etc.), the overall waveform and other information is displayed here.

B Enlarged waveform section

The loaded track's waveform is displayed here.

C Browse section

Displays the track list, tree view, and playlist palette.

D Global section

Displays the display status of effect panel and sampler panel, and the level of the master sound, etc.

Adding music files to Collection

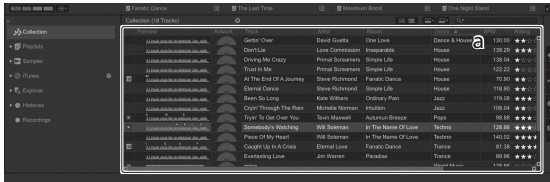
"Collection" is music files that are managed by rekordbox. Analyze music files on the computer and register the files as rekordbox music collections to use the files with rekordbox.

1 Click [Collection] in the tree view.

The [Collection] music files are displayed in the track list.

2 Open Finder or Windows explorer, then drag and drop music files or folders including music files to the track list.

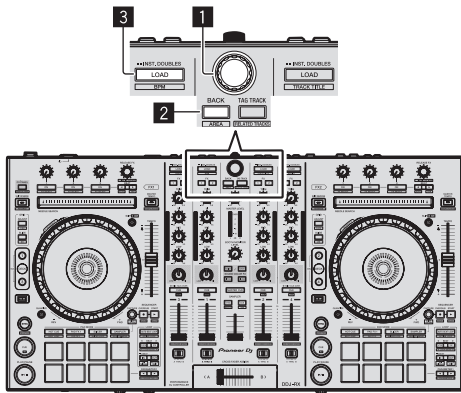
The music files are added to the collection, and the waveform information analysis of the music files starts. Wait until the analysis of all the music files are finished.



a Track list

Loading tracks and playing them

The following describes the procedure for loading tracks into deck [1] as an example.



1 Rotary selector

2 BACK button

3 LOAD button

1 Press this unit's [BACK] button, move the cursor to the tree view on the computer screen, then turn the rotary selector and select a collection or playlist, etc.

2 Press the rotary selector, move the cursor to the track list on the computer screen, then turn the rotary selector and select a track.



a Track list

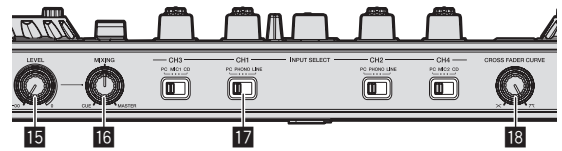
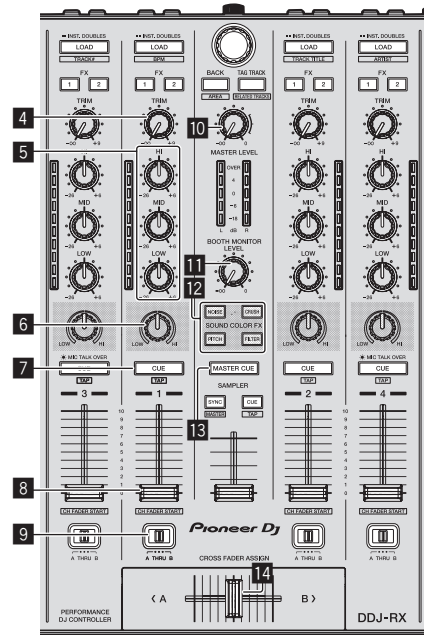
b Tree View

3 Press the [LOAD] button to load the selected track onto the deck.

Playing tracks and outputting the sound

The following describes the procedure for outputting the channel 1 sound as an example.

- Set the volume of the devices (power amplifier, powered speakers, etc.) connected to the [MASTER OUT 1] and [MASTER OUT 2] terminals to an appropriate level. Note that loud sound will be output if the volume is set too high.



4 TRIM control

5 EQ (HI, MID, LOW) controls

6 COLOR control

7 Headphones CUE button

8 Channel fader

9 Crossfader Assign Switch

10 MASTER LEVEL control

11 BOOTH MONITOR LEVEL control

12 SOUND COLOR FX buttons

13 MASTER CUE button

14 Crossfader

15 HEADPHONES LEVEL control

16 HEADPHONES MIX control

17 INPUT SELECT switch

18 CROSS FADER CURVE control

1 Set the positions of the controls, etc., as shown below.

| Names of controls, etc. | Position |
|----------------------------|-------------------------------|
| MASTER LEVEL control | Turned fully counterclockwise |
| TRIM control | Turned fully counterclockwise |
| EQ (HI, MID, LOW) controls | Center |
| COLOR control | Center |
| Channel fader | Moved forward |
| Crossfader Assign Switch | [THRU] position |
| INPUT SELECT switch | [PC] position |

2 Press the [▶/II] button to play the track.



3 Move the channel fader away from you.

4 Turn the [TRIM] control.

Adjust [TRIM] so that the orange indicator on the channel level indicator lights at the peak level.

5 Turn the [MASTER LEVEL] control to adjust the audio level of the speakers.

Adjust the sound level output from the [MASTER OUT 1] and [MASTER OUT 2] terminals to an appropriate level.

Monitoring sound with headphones

Set the positions of the controls, etc., as shown below.

| Names of controls, etc. | Position |
|--------------------------|-------------------------------|
| HEADPHONES MIX control | Center |
| HEADPHONES LEVEL control | Turned fully counterclockwise |

1 Press the headphones [CUE] button for the channel 1.

2 Turn the [HEADPHONES LEVEL] control.

Adjust the sound level output from the headphones to an appropriate level.



Note

This unit and rekordbox dj are equipped with variety of functions to allow for more individualistic DJ performances. For details on each function, see the Operating Instructions and rekordbox software's manual.

- The operating instructions of this unit can be downloaded from the Pioneer DJ site. For details, see *Acquiring this unit's Operating Instructions* (p. 5).
- The rekordbox software manual can be downloaded from "rekordbox.com". For details, see *Downloading the rekordbox software manual* (p. 5).

Quitting the system

1 Quit rekordbox.

2 Press the [STANDBY/ON] switch on this unit's rear panel to set this unit's power to standby.

3 Disconnect the USB cable from your computer.

About the AC adapter

Safety instructions

To ensure your personal safety and to maximize the full operating potential of your unit, read and follow these safety instructions.

Read & Retain Instructions

Read all operating and user information provided with this product.

Cleaning

Use a damp cloth to clean the exterior housing. Avoid using any fluids including liquid, aerosol or alcohol-based cleaning products.

Water or Moisture

Avoid operating or locating this product near water or other sources of fluid.

Accessories

Do not place this product on an unstable cart, stand, or table. The product may fall and be seriously damaged.

Ventilation

Do not block or cover this product in use. This unit should not be placed in a built-in installation unless properly ventilated.

Environment

Avoid placing this product in a location with exposure to large quantities of dust, high temperatures, high humidity, or subject to excessive vibrations or shocks.

Power Sources

Operate this product only from the recommended power sources. If you are unsure of the power source, consult an authorized Pioneer representative.

Power-Cord Protection

When unplugging the unit, pull on the plug – not on the cord. Do not handle the cord or plug with wet hands; doing so could cause an electric short or shock. Do not allow anything to pinch or rest on the power cord and do not place in a walkway.

Power

Turn OFF the system before installing this or any other hardware device.

Overloading

Avoid connecting too many devices to a single wall socket or power source as this can cause fires or short circuits.

Object & Liquid Entry

Never push inappropriate objects in to the device. Avoid spilling any liquids in to or on the outside of the drive.

Servicing

Opening or removing the cover exposes you to possible electrical shock or other danger. Contact a Pioneer authorized service representative for repairing this product (refer to the enclosed Service & Support Card).

Damage Requiring Service

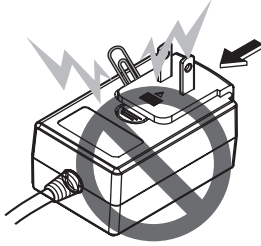
Unplug the unit and refer servicing to qualified service personnel in the following situations:

- When the power cord, plug, or chassis is damaged.
- If liquid has been spilled, or objects have fallen into the product.
- If the product has been exposed to rain or water.
- If the product does not operate normally when the operating instructions are followed. Adjust only those controls that are covered by the operating instructions. Improper adjustment of other controls may result in damage and can require extensive work by a qualified technician to restore the unit to its normal operation.
- When the product exhibits a distinct change in performance – this indicates a need for service.

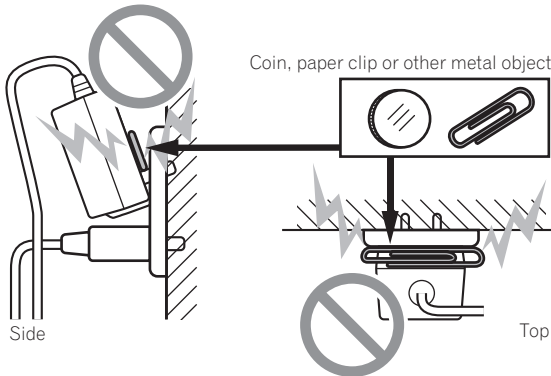
Check that there are no irregularities with the AC adapter or power plug, then insert the power plug into the specified position of the AC adapter using the specified procedure until a click is heard. For details, see *Mounting the power plug* on page 16.

If there are irregularities with the AC adapter or power plug, ask your nearest Pioneer authorized service center or your dealer to carry out repair work.

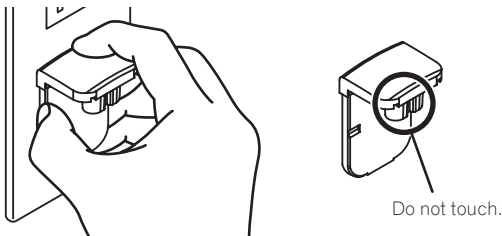
- Do not use this unit with a coin, paper clip or other metal object stuck between the AC adapter and power plug. Doing so could cause a short circuit, leading to fire or electric shock.



- When mounting the AC adapter on a wall outlet, make sure there is no space between the AC adapter and the wall outlet. Faulty contact or a coin, paper clip or other metal object getting stuck in the space could cause a short circuit, leading to fire or electric shock.

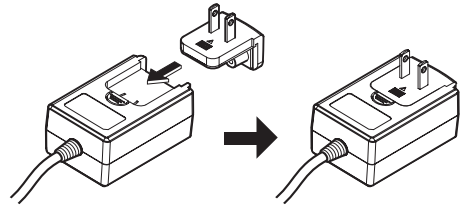


- The power plug could come detached from the AC adapter and remain in the power outlet if someone trips on the AC adapter's power cord or if something hits the AC adapter. If this happens, remove the power plug remaining in the outlet with dry hands, holding it as shown on the diagram below and without touching metal parts. Do not use any tools to remove it.



Mounting the power plug

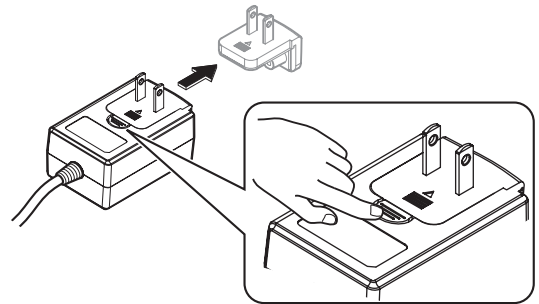
Slide the power plug along the guide rails in the AC adapter unit as shown on the diagram below, then press in until a click is heard.



❖ Removing the power plug

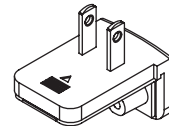
While pressing the [PUSH] button on the AC adapter unit, slide the power plug away from the adapter as shown on the diagram below to remove it.

Once the power plug is mounted, there is no need to remove it.



❖ Power plug

The power plug shown below is included with this product.



Additional information

Changing the settings

- The jog dial's sensitivity can be adjusted on this unit. For details on how to change settings on this unit, see the "Changing the settings" section in the Operating Instructions, which can be downloaded from the Pioneer DJ support page.

Troubleshooting

- If you think that there is something wrong with this unit, check the items in the "Troubleshooting" section of this unit's Operating Instructions, and also check [FAQ] for the [DDJ-RX] in [FAQ] on the Pioneer DJ support page.
<http://www.pioneerdj.com/>
Sometimes the problem may lie in another component. Inspect the other components and electrical appliances being used. If the problem cannot be rectified, ask your nearest Pioneer authorized service center or your dealer to carry out repair work.
- This unit may not operate properly due to static electricity or other external influences. In this case, proper operation may be restored by turning the power off, waiting 1 minute, then turning the power back on.

About trademarks and registered trademarks

- "Pioneer DJ" is a trademark of PIONEER CORPORATION, and is used under license.
- rekordbox is a trademark or registered trademark of the Pioneer DJ Corporation.

The names of companies and products mentioned herein are trademarks or registered trademarks of their respective owners.

Cautions on copyrights

Recordings you have made are for your personal enjoyment and according to copyright laws may not be used without the consent of the copyright holder.

- Music recorded from CDs, etc., is protected by the copyright laws of individual countries and by international treaties. It is the full responsibility of the person who has recorded the music to ensure that it is used legally.
- When handling music downloaded from the Internet, etc., it is the full responsibility of the person who has downloaded the music to ensure that it is used in accordance with the contract concluded with the download site.

Specifications

AC adapter

| | |
|---------------------|--------------------------------|
| Power | AC 100 V to 240 V, 50 Hz/60 Hz |
| Rated current | 800 mA |
| Rated output | DC 5 V, 3 A |

General – Main Unit

| | |
|---------------------------------------|--|
| Main unit weight | 5.8 kg (12.8 lb) |
| Max. dimensions | 664 mm (W) × 70.4 mm (H) × 353.4 mm (D) (26.1 in. (W) × 2.8 in. (H) × 13.9 in. (D)) |
| Tolerable operating temperature | +5 °C to +35 °C (+41 °F to +95 °F) |
| Tolerable operating humidity | 5 % to 85 % (no condensation) |

Audio Section

| | |
|--------------------------------|----------|
| Sampling rate | 44.1 kHz |
| A/D, D/A converter | 24 bits |
| Frequency characteristic | |

| | |
|--|-----------------|
| USB, CD/LINE, MIC1, MIC2 | 20 Hz to 20 kHz |
| S/N ratio (rated output, A-WEIGHTED) | |

| | |
|----------------------|--------|
| USB | 107 dB |
| CD/LINE | 96 dB |
| PHONO | 87 dB |
| MIC | 80 dB |

| | |
|--|---------|
| Total harmonic distortion (20 Hz — 20 kHzBW) | |
| USB | 0.003 % |
| CD/LINE | 0.005 % |

| | |
|--|---------------|
| Standard input level / Input impedance | |
| CD/LINE | -12 dBu/47 kΩ |
| PHONO | -52 dBu/47 kΩ |
| MIC | -57 dBu/3 kΩ |

| | |
|---|--------------------|
| Standard output level / Load impedance / Output impedance | |
| MASTER OUT 1 | +6 dBu/10 kΩ/330 Ω |
| MASTER OUT 2 | +2 dBu/10 kΩ/1 kΩ |
| BOOTH OUT | +6 dBu/10 kΩ/330 Ω |
| PHONE | +4 dBu/32 Ω/32 Ω |

| | |
|---|--------------|
| Rated output level / Load impedance | |
| MASTER OUT 1 | 24 dBu/10 kΩ |
| MASTER OUT 2 | 20 dBu/10 kΩ |
| BOOTH OUT | 24 dBu/10 kΩ |

| | |
|----------------------|-------|
| Crosstalk | |
| CD/LINE | 82 dB |

| | |
|--|--------------------------|
| Channel equalizer characteristic | |
| HI | -26 dB to +6 dB (13 kHz) |
| MID | -26 dB to +6 dB (1 kHz) |
| LOW | -26 dB to +6 dB (70 Hz) |

Input / Output terminals

| | |
|--------------------------------|--------|
| CD input terminal | |
| RCA pin jack | 2 sets |

| | |
|---|--------|
| PHONO/LINE input terminals | |
| RCA pin jack | 2 sets |

| | |
|---|-------|
| MIC1 terminal | |
| XLR connector/phone jack (Ø 6.3 mm) | 1 set |

| | |
|-----------------------------|-------|
| MIC2 terminal | |
| Phone jack (Ø 6.3 mm) | 1 set |

| | |
|---|-------|
| MASTER OUT 1 output terminal | |
| XLR connector | 1 set |

| | |
|---|-------|
| MASTER OUT 2 output terminal | |
| RCA pin jacks | 1 set |

| | |
|--|-------|
| BOOTH OUT output terminal | |
| Phone jack (Ø 6.3 mm) | 1 set |

| | |
|---|-------|
| PHONES output terminal | |
| Stereo phone jack (Ø 6.3 mm) | 1 set |
| Stereo mini phone jack (Ø 3.5 mm) | 1 set |

| | |
|---------------------------|-------|
| USB terminal | |
| B type | 1 set |

- The specifications and appearance of this unit and the software are subject to change for improvement without notice.

Pioneer Dj

Pioneer DJ Americas, Inc.
LIMITED WARRANTY
WARRANTY VALID ONLY IN THE U.S.A. AND CANADA

WARRANTY

Pioneer DJ Americas, Inc. (PDJA) warrants that products distributed by PDJA in the U.S.A. and Canada that fail to function properly under normal use due to a manufacturing defect when installed and operated according to the owner's manual enclosed with the unit will be repaired or replaced with a unit of comparable value, at the option of PDJA, without charge to you for parts or actual repair work. Parts supplied under this warranty may be new or rebuilt at the option of PDJA.

THIS LIMITED WARRANTY APPLIES TO THE ORIGINAL OR ANY SUBSEQUENT OWNER OF THIS PIONEER DJ PRODUCT DURING THE WARRANTY PERIOD PROVIDED THE PRODUCT WAS PURCHASED FROM AN AUTHORIZED PIONEER DJ DISTRIBUTOR/DEALER IN THE U.S.A. OR CANADA. YOU WILL BE REQUIRED TO PROVIDE A SALES RECEIPT OR OTHER VALID PROOF OF PURCHASE SHOWING THE DATE OF ORIGINAL PURCHASE OR, IF RENTED, YOUR RENTAL CONTRACT SHOWING THE PLACE AND DATE OF FIRST RENTAL. IN THE EVENT SERVICE IS REQUIRED, THE PRODUCT MUST BE DELIVERED WITHIN THE WARRANTY PERIOD, TRANSPORTATION PREPAID, ONLY FROM WITHIN THE U.S.A. AS EXPLAINED IN THIS DOCUMENT. YOU WILL BE RESPONSIBLE FOR REMOVAL AND INSTALLATION OF THE PRODUCT. PDJA WILL PAY TO RETURN THE REPAIRED OR REPLACEMENT PRODUCT TO YOU WITHIN THE U.S.A.

PRODUCT WARRANTY PERIOD

DJ Audio and Video

Parts Labor

1 Year 1 Year

The warranty period for retail customers who rent the product commences upon the date product is first put into use (a) during the rental period or (b) retail sale, whichever occurs first.

WHAT IS NOT COVERED

IF THIS PRODUCT WAS PURCHASED FROM AN UNAUTHORIZED DISTRIBUTOR, THERE ARE NO WARRANTIES, EXPRESS OR IMPLIED, INCLUDING THE IMPLIED WARRANTY OF MERCHANTABILITY AND THE IMPLIED WARRANTY OF FITNESS FOR A PARTICULAR PURPOSE AND THIS PRODUCT IS SOLD STRICTLY "AS IS" AND "WITH ALL FAULTS".

PIONEER DJ SHALL NOT BE LIABLE FOR ANY CONSEQUENTIAL AND/OR INCIDENTAL DAMAGES.

THIS WARRANTY DOES NOT APPLY IF THE PRODUCT HAS BEEN SUBJECTED TO POWER IN EXCESS OF ITS PUBLISHED POWER RATING.

THIS WARRANTY DOES NOT COVER THE CABINET OR ANY APPEARANCE ITEM, USER ATTACHED ANTENNA, ANY DAMAGE TO RECORDS OR RECORDING TAPES OR DISCS, ANY DAMAGE TO THE PRODUCT RESULTING FROM ALTERATIONS, MODIFICATIONS NOT AUTHORIZED IN WRITING BY PIONEER DJ, ACCIDENT, MISUSE OR ABUSE, DAMAGE DUE TO LIGHTNING OR TO POWER SURGES, SUBSEQUENT DAMAGE FROM LEAKING, DAMAGE FROM INOPERATIVE BATTERIES, OR THE USE OF BATTERIES NOT CONFORMING TO THOSE SPECIFIED IN THE OWNER'S MANUAL.

THIS WARRANTY DOES NOT COVER THE COST OF PARTS OR LABOR WHICH WOULD BE OTHERWISE PROVIDED WITHOUT CHARGE UNDER THIS WARRANTY OBTAINED FROM ANY SOURCE OTHER THAN A PIONEER DJ AUTHORIZED SERVICE COMPANY OR OTHER DESIGNATED LOCATION. THIS WARRANTY DOES NOT COVER DEFECTS OR DAMAGE CAUSED BY THE USE OF UNAUTHORIZED PARTS OR LABOR OR FROM IMPROPER MAINTENANCE.

ALTERED, DEFACED, OR REMOVED SERIAL NUMBERS VOID THIS ENTIRE WARRANTY

NO OTHER WARRANTIES

PIONEER DJ LIMITS ITS OBLIGATIONS UNDER ANY IMPLIED WARRANTIES INCLUDING, BUT NOT LIMITED TO, THE IMPLIED WARRANTIES OF MERCHANTABILITY AND FITNESS FOR A PARTICULAR PURPOSE, TO A PERIOD NOT TO EXCEED THE WARRANTY PERIOD. NO WARRANTIES SHALL APPLY AFTER THE WARRANTY PERIOD. SOME STATES DO NOT ALLOW LIMITATIONS ON HOW LONG AN IMPLIED WARRANTY LASTS AND SOME STATES DO NOT ALLOW THE EXCLUSIONS OR LIMITATIONS OF INCIDENTAL OR CONSEQUENTIAL DAMAGES, SO THE ABOVE LIMITATIONS OR EXCLUSIONS MAY NOT APPLY TO YOU. THIS WARRANTY GIVES YOU SPECIFIC LEGAL RIGHTS AND YOU MAY HAVE OTHER RIGHTS WHICH MAY VARY FROM STATE TO STATE.

TO OBTAIN SERVICE

PDJA has appointed a number of Authorized Service Companies throughout the U.S.A. and Canada should your product require service. To receive warranty service you need to present your sales receipt or, if rented, your rental contract showing place and date of original owner's transaction. If shipping the unit you will need to package it carefully and send it, transportation prepaid by a traceable, insured method, to an Authorized Service Company. Package the product using adequate padding material to prevent damage in transit. The original container is ideal for this purpose. Include your name, address and telephone number where you can be reached during business hours.

On all complaints and concerns in the U.S.A. and Canada call Customer Support at 1-800-872-4159.

For hook-up and operation of your unit or to locate an
Authorized Service Company, please call or write:
CUSTOMER SUPPORT
Pioneer DJ Americas, Inc.
P.O. BOX 1720
LONG BEACH, CALIFORNIA 90801
1-800-872-4159
<http://www.pioneerelectronics.com>

DISPUTE RESOLUTION

Following our response to any initial request to Customer Support, should a dispute arise between you and Pioneer DJ, Pioneer DJ makes available its Complaint Resolution Program to resolve the dispute. The Complaint Resolution Program is available to you without charge. You are required to use the Complaint Resolution Program before you exercise any rights under, or seek any remedies, created by Title I of the Magnuson-Moss Warranty-Federal Trade Commission Improvement Act, 15 U.S.C. 2301 *et seq.*

To use the Complaint Resolution Program call 1-800-872-4159 and explain to the customer service representative the problem you are experiencing, steps you have taken to have the product repaired during the warranty period and the name of the authorized Distributor/Dealer from whom the Pioneer DJ product was purchased. After the complaint has been explained to the representative, a resolution number will be issued. Within 40 days of receiving your complaint, Pioneer DJ will investigate the dispute and will either: (1) respond to your complaint in writing informing you what action Pioneer DJ will take, and in what time period, to resolve the dispute; or (2) respond to your complaint in writing informing you why it will not take any action.

RECORD THE PLACE AND DATE OF PURCHASE FOR FUTURE REFERENCE

Model No. _____ Serial No. _____ Purchase Date _____

Purchased From _____

KEEP THIS INFORMATION AND YOUR SALES RECEIPT IN A SAFE PLACE

UCP0515

To register your product, find the nearest authorized service location, to purchase replacement parts, operating instructions, or accessories, please go to one of following URLs :

Pour enregistrer votre produit, trouver le service après-vente agréé le plus proche et pour acheter des pièces de rechange, des modes d'emploi ou des accessoires, reportez-vous aux URL suivantes :

In the USA/Aux Etats-Unis or In Canada/Aux Canada
<http://www.pioneerelectronics.com>

S018_C1_EnFr_PSV

© 2015 Pioneer DJ Corporation.
All rights reserved.

Pioneer DJ Corporation

1-1, Shin-ogura, Saiwai-ku, Kawasaki-shi, Kanagawa 212-0031, Japan

Pioneer DJ Americas, Inc.

P.O. BOX 1720, Long Beach, California 90801-1720, U.S.A. TEL: (800) 421-1404

K002_PSV_CU

Printed in China

<DRH1338-A>
<502-SXMK3A-3545>