

USE IT. LIVE IT.

SC3900:

Digital Media Turntable / DJ Controller



DJing has progressed to a new era with the evolution of digital media. In a world that was once first dominated by vinyl, then CDs, and now the emerging USB and streaming devices, it's time to revolutionize the DJ booth, because right now as a DJ you

Features

- Compatible with included ENGINE Music Management Software (PC/Mac)
- ENGINE iPad app available for easy file searching and player status display
- Player Link function for sharing USB drives across multiple SC3900s (up to four) and for connection to ENGINE software (PC/Mac/iPad).
- Completely redesigned 9-Inch platter equipped with a brushless high-torque direct drive motor
- Seamless switching between media source devices
- Real vinyl platter mode with independently adjustable start and stop times
- Built-In USB / MIDI control function
- Built-In USB audio interface (ASIO / CORE compliant)
- Hybrid MIDI mode included for DVS applications
- Supports CD-DA, CD-ROM and audio playback from USB memory devices (AAC, AIFF, MP3, WAV)
- Burr Brown 24 bit DAC processing for superior audio fidelity
- Redesigned PLAY and CUE buttons for greater tactile feel and response
- Fast search and quick jump functions
- Top mounted USB port for USB stick and hard disk drives
- 4 dedicated Hot Cues (8 in MIDI mode via MIDI layer option)
- Auto / manual loop functions
- Reverse and dump platter effects
- Deep pitch resolution and key adjust
- Strobe indicator
- 4-Way BPM counter (Auto BPM, Manual TAP, Manual BPM, Reads BPM Metadata)
- BPM sync feature
- 3-way pitch bend functionality
- Digital output
- Fast loading slot-in drive

make a choice between DJing with a turntable, a turntable and software, or a CDJ/Controller. No one device has ever managed to give you the flexibility to choose depending on your performance, style or your audience. That is, until now.

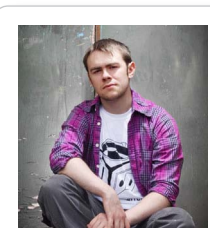
Denon DJ is proud to introduce the SC3900: Digital Turntable and Media Controller with 9-inch Active Platter. Utilizing a completely redesigned High-Torque Direct Drive Motor that accurately mirrors the feel of vinyl, the SC3900 brings home that familiar feel but with the choice of CD, USB, Software, or even a networked Media server as your source of tracks.

Years of development with top international DJs has allowed Denon DJ to perfect the platter of the SC3900 for use with digital media without losing that feel of vinyl (the surface of the platter is actually a 9" vinyl disc!) – all allowing Scratch DJ champions to push their performances even further than possible with a vinyl 'record'.



Playback and scratch tracks from a myriad of sources including USB 'sticks' or USB Hard Disk Drives via the top mounted USB port. This allows the move from venue to venue with just a single USB device and not a laptop or CD collection, although the SC3900 can also playback CDs via the front loading CD slot, giving you true flexibility of your media choices.

The SC3900 also comes complete with the brand new ENGINE music management software that has been designed with players such as the SC3900 in mind, allowing the ultimate in DJ set preparation, playback and control. (See page 2 for more information on ENGINE)



"The 9" platter makes scratch moves more nimble by being that little bit smaller, but maintains the perfect amount of space to grip it, scratching & mixing tracks feels no different than using vinyl!"

--DJ Switch
SC3900 endorsee
3x World DMC Champion

DJ SWITCH | www.djswitchbeatz.co.uk



HYBRID MIDI control of DVS applications

PLAYER LINK functionality for ENGINE and USB devices
see reverse side



DENON DJ

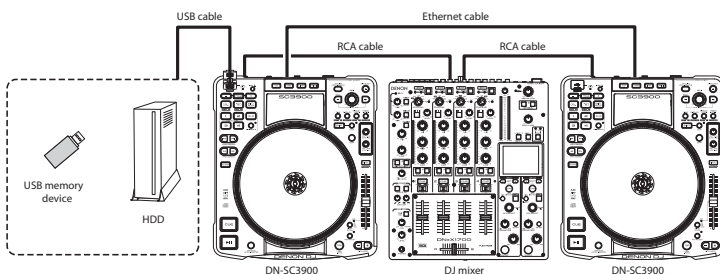
WWW.DENONDJ.COM

SC3900:

Specifications

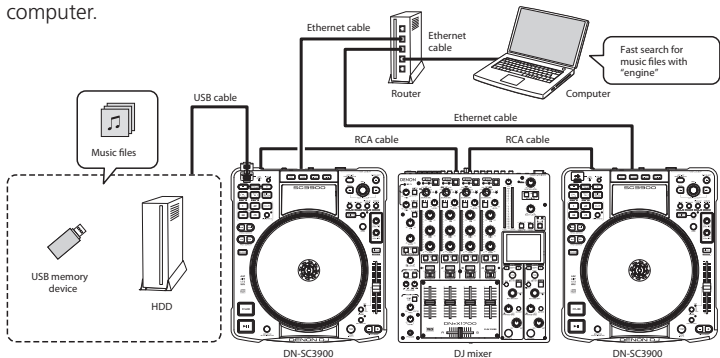
Player Link

Prepare the perfect set in the studio or on a computer at home, then export it to a USB stick or Hard Disk Drive and have everything needed for your DJ performance in a device small enough to fit in your pocket. Then, when it's time to perform simply plug in and play, even sharing that one drive's files with up to three other compatible players over an inexpensive network router.



Player Link with ENGINE

Additionally, playback of files on your PC or MAC is possible with the included ENGINE music management software which doesn't even require a high specification computer to work quickly and efficiently. With file searching speeds that leaves most other software standing still, ENGINE's power is achieved by leaving the taxing audio processing at the player so the software is free to run, before and during your performance, utilizing the full capabilities of your computer.



Features

Multi-player/multi-storage playback

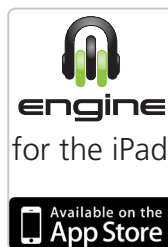
Connect up to four SC3900s to a computer with ENGINE installed and all four media players can play files from that computer. Additionally, you can share files from one USB drive across all four units with ENGINE's advanced search functions

Manage up to 100,000 music files and fast search engine

ENGINE allows management of up to 100,000 music files per USB memory device or HDD. Furthermore, fast and multifunctional file search is available with the newly developed search system

Operation environment with less latency

Because audio processing is completed at the player level and not on your computer, file searching and execution of your sets are completed with less latency. Additionally, you can connect a USB memory device or HDD to continue playback without interruption even if the computer freezes



For more information on ENGINE, visit www.denondj.com

Audio

	(0dBu= 0.775Vrms, 0 dBV = 1 Vrms)
Quantization:	32 bit (internal DSP process)
Sampling frequency:	44.1 kHz(at normal pitch)
Total harmonic distortion:	0.05% or less
Signal to noise ratio:	106 dB or more
Head room:	6 dB
Channel separation:	100 dB or more
Frequency response:	20 – 20 kHz, ±0.5 dB
Analog output level:	2.0 Vrms
Digital output level:	0.5 Vp-p 75Ω

Functions

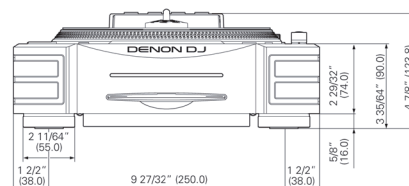
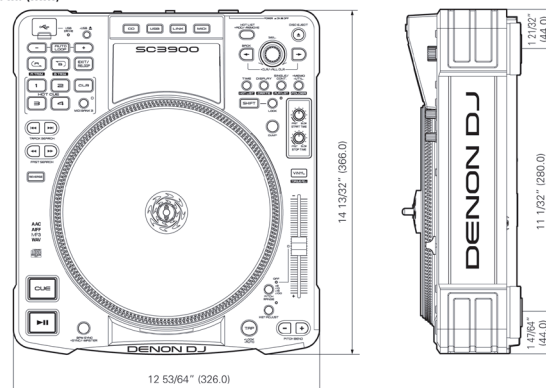
Instant start:	Within 20 msec.
Variable pitch:	±6% (0.02% pitch) ±10% (0.05% pitch) ±16% (0.05% pitch) ±100 % (1.0% pitch)
Pitch bend:	Pitch range ±6 % – ±16 % : ±32% Pitch range ±100% : -99 % – +100%
Search precision:	1/75 sec.
Folder search:	9 layers (including root folder)

General

USB MIDI input/output	IN:1 ch, OUT:1 ch MIDI 1.0, USB B
Power supply:	
U.S.A. and Canada models:	AC 120V, 60 Hz
EU ,U.K. and Asia/Pacific models:	AC 230V, 50 Hz
Power consumption:	30 W
Operational temperature:	+5°C – +35°C
Operational humidity:	25% – 85%
Storage temperature:	-20°C – +60°C

For the purpose of improvement, the specifications and design are subject to change without notice.

Unit: in. (mm)



Weight: 12 lbs 12.6 oz (5.8 kg)